

# Relief High School Boundary Scenarios

Ardrey Kell, Myers Park, and South Mecklenburg

December 2, 2022

Planning Services Department

# Welcome

## Objectives:

- Overview of past, ongoing and upcoming work
- Sharing feedback we have collected so far
- Next steps



# Student Assignment Policy S-ASGP

## **Board Requirement for Student Assignment**

- contiguous boundaries

## **Board's Decision Matrix for School Boundary Decisions**

- home to school distance
- intact feeder patterns
- socioeconomic diversity
- utilization

## **Board's Additional Factors for Consideration**

- the feasibility of achieving the board's goals through other means, such as establishing partial magnet schools;
- keeping entire neighborhoods assigned to the same school;
- projections for population growth and demographic shifts;
- site limitations or legal restrictions that affect expansion capabilities;
- whether the school has been identified for capital improvements through bond or other funding.

# Process for Engagement and Decision

## New Relief High School Boundary

### **Superintendent, through his designees, gathers community input and feedback:**

At least 3 engagement sessions:

- session 1 introduces the opportunity, seeks input from community on new boundary
- session 2 shares at least two draft boundary scenarios and seeks community feedback
- session 3 previews the superintendent's recommendation to the Board

### **Community input and feedback shared with the superintendent and Board:**

- at least one public update to the Board during a regularly scheduled Board meeting
- at least one public hearing during a regularly scheduled Board meeting

### **Multiple inputs to the Superintendent's recommendation and Board's vote**

- Policy S-ASGP
- community input
- achieving 2017 bond intent (i.e., high school relief)

**Superintendent makes recommendation to the Board**

**Public hearing and Board decision**

**Change becomes effective**

## Planning & Engagement

- Meeting with Internal Team consisting of Learning Community Superintendents, Principals, and District Administration- ongoing
- Scheduling and facilitating parent work groups and conversations- ongoing
- Upcoming community sessions
- Upcoming interactive maps and surveys for feedback

## Scenario Modeling Approach

### March 1, 2022

- Community Session 1
- 6 CMS staff | 3 BOE members | 161 general public

### March 25, 2022

- Crowd source mapping tool  
2,976 views | 103 responses

### April 1, 2022

- Initial parent interest meeting

### April 7, 2022

- Community Session 2  
10+ CMS staff | 180+ general public

## Engagement

- Feedback from Board
- Feedback from Community via email and documented
- Feedback at Parent workgroup sessions (**April 19 & May 24**)
  - 4 subgroups
- **April 26, 2022:** Board Update

# AK/MP/SM Relief High School

## Continued Engagement & Next Steps Fall 2022

<b>Community Outreach and Facilitation of Community Conversations</b>	<ul style="list-style-type: none"><li>• Ongoing: Discussions with Internal Planning Team (Learning Community Superintendents, Principals, District Staff)</li><li>• Aug 2022: Monthly Parent Workgroup Meetings begin</li><li>• Aug- Dec 2022: Parent Workgroup researches urban planning, best practices, and supports small group sessions</li><li>• Oct- Dec 2022: Small Group Sessions with Parents, Students, and Staff</li><li>• Oct- Dec 2022: Development of Q&amp;A to address questions and concerns</li><li>• Nov 2022 – Jan 2023: Surveys for work group, parents, schools, staff</li><li>• Nov 2022 – Jan 2023: On-the-ground neighborhood evaluation</li><li>• Early January 2023- In-person Public Engagement Session</li></ul>
<b>Finalize Recommendation</b>	Late January 2023
<b>Public Hearing Board Vote</b>	February 2023

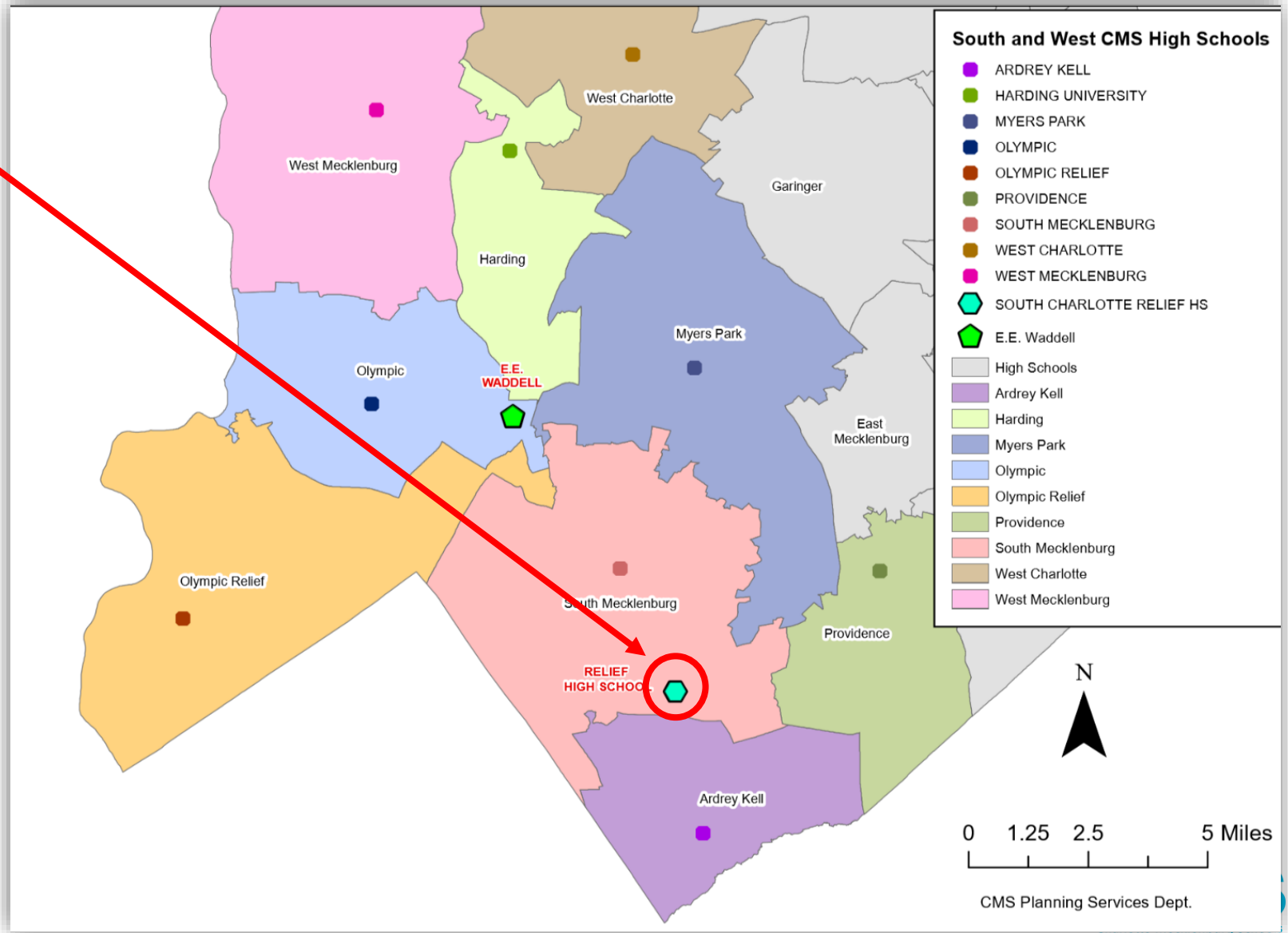
# AK/MP/SM Relief High School

## Scenario Development and Analysis

<b>Scenario Development</b>	<ul style="list-style-type: none"><li>• Spring 2022- Scenarios developed for community feedback (<i>Purple, Pink</i>)</li><li>• August 2022- Creation of two additional scenarios built upon the previous scenarios (<i>Blue, Green</i>)</li><li>• Sept 2022- After review and feedback from parent workgroup, Planning created 3 additional scenarios for review by internal team and parent workgroup (<i>Orange, Yellow, Violet</i>)</li><li>• Sept 2022- Green scenario was combined with the blue scenario</li><li>• Oct 2022- 4 scenario options presented to Internal Planning Team (<i>Blue, Orange, Yellow, Violet</i>)</li><li>• Oct 2022- 4 scenario options presented to Parent Workgroup (<i>Blue, Orange, Yellow, Violet</i>)</li><li>• Oct-Nov 2022 – 5 new scenario drafts based on feedback so far (Red A, Red B, Brown A, Brown B, Brown C)</li><li>• <b>Oct 2022-Jan 2023- Continue with scenario iterations and modification in accordance with board priorities, board policy, and community feedback</b></li></ul>
<b>Analysis</b>	<ul style="list-style-type: none"><li>• Sept 2022- New student enrollment data processed for 2022-2023 school year at 20<sup>th</sup> day</li><li>• Sept 2022- Began scenario development and analysis grounded in Board priorities</li><li>• Sept-Oct- Calculated estimates for number of students impacted, utilization, feeder patterns, socioeconomics, and proximity for option scenarios</li><li>• Oct 2022- Measured, analyzed, and presented outcomes for each scenario option</li><li>• Oct-Dec 2022- Analyze community feedback</li></ul>
<b>Additional Considerations</b>	<ul style="list-style-type: none"><li>• Urban planning &amp; development (permits, proposals, land use changes, transportation)</li><li>• Program or pathway offerings at current high schools (magnet programs, CTE, etc)</li><li>• Learning from others who have recently opened high schools</li></ul>

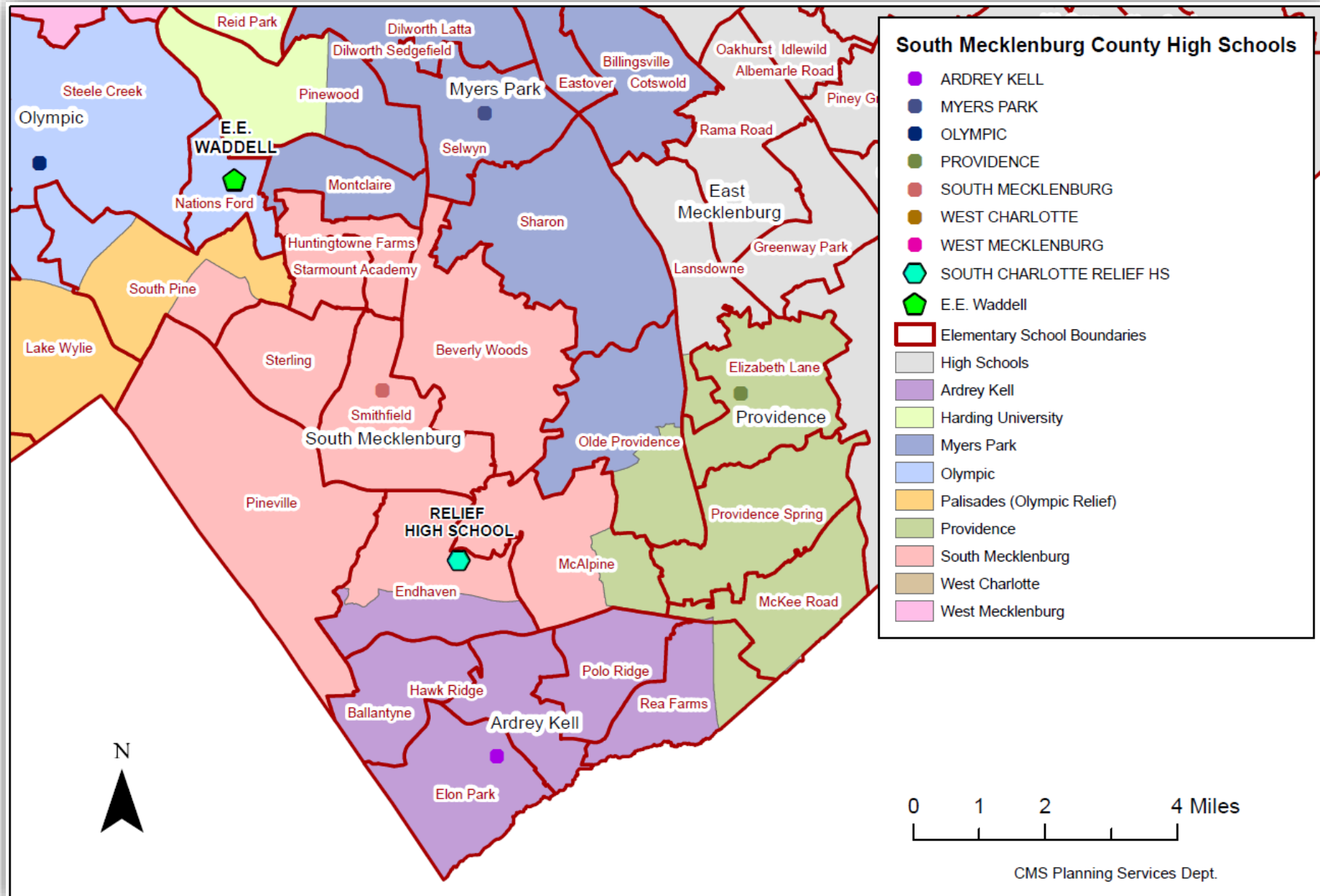
# South Charlotte Relief High School

- New 100 classroom high school located at 12218 North Community House Road.
- Relieves overcrowding at Ardrey Kell, South Mecklenburg and Myers Park high schools

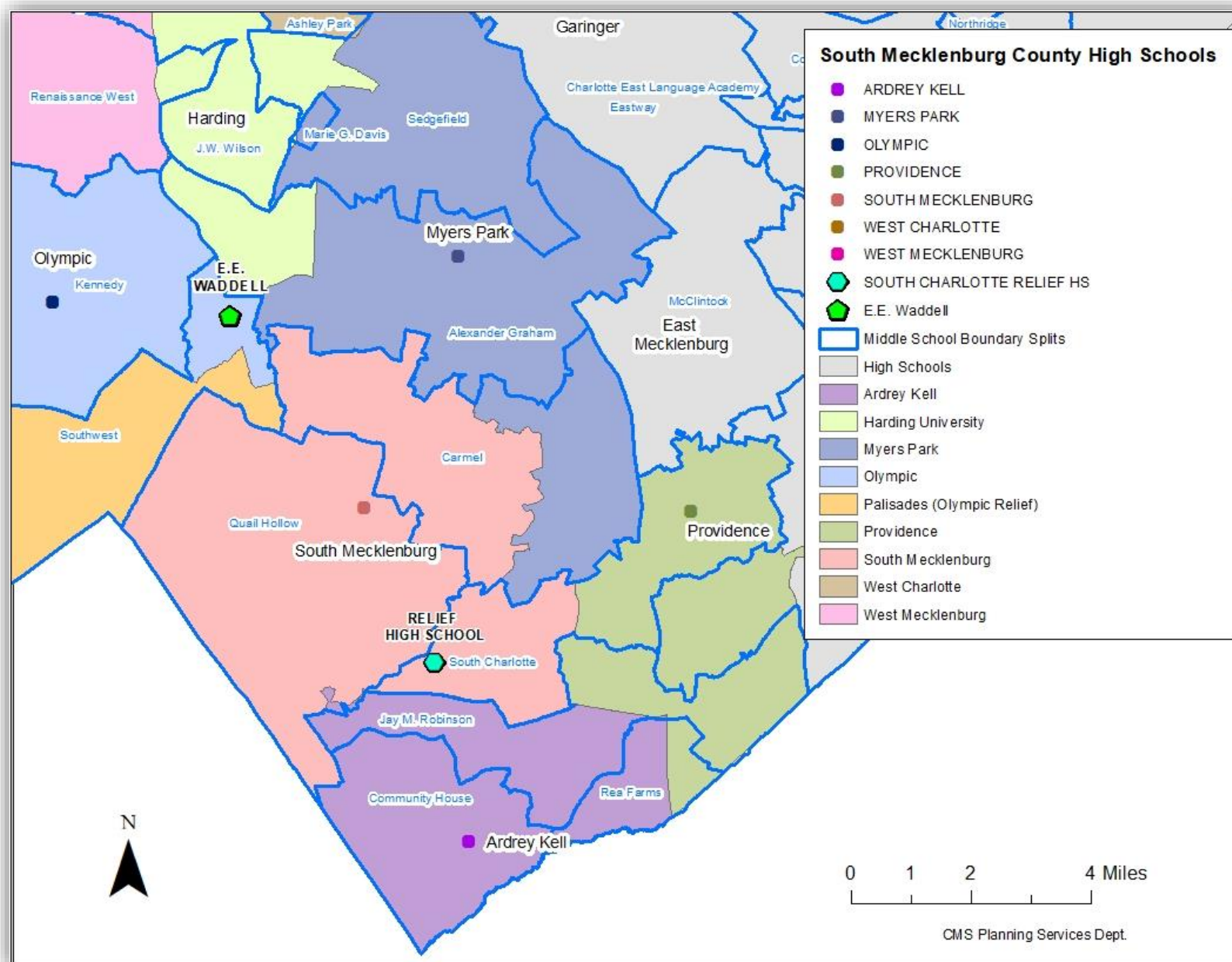




# High School by Elementary Attendance Area



# High School by Middle School Attendance Area



# Current School Data for AK/MP/PR/SM:



## Enrollment

School	Number of Classrooms	Number of Mobile Units	2021-22 Enrollment	2022-23 Enrollment	Estimated Student Capacity*	Current utilization rate
Ardrey Kell	96	22	3,494	3,543	2,500	<b>142%</b>
Myers Park	140	19	3,539	3,615	3,000	<b>121%</b>
Providence	88	7	2,025	2,057	2,000	<b>103%</b>
South Mecklenburg	125	9	3,259	3,366	2,700	<b>125%</b>

\*This estimate is based on various factors such as the number of available/anticipated classrooms, staff allotments, resources, school management, and district standards. This is adjusted from the original estimates shared to more closely reflect the environments at the schools.

The Board's goal is to move towards 100-classroom, 2500 student high schools.

# Current School Data for AK/MP/SM: Current Feeder Patterns

## Summary of Feeder Patterns for High Schools in Impact Area

Total Feeder Patterns	Count	Description	Improvement Indicator
ES to MS to HS	37	Total Number of Feeder Patterns	Decrease
MS to HS	15	Total Number of MS to HS Feeder Patterns	Decrease
Intact Feeder Patterns			
ES to MS to HS intact	19	Count of Intact Feeder Patterns	Increase
MS to HS intact	3	Count of Intact Feeder Patterns from MS to HS	Increase

# Current Feeder Patterns

	2023-2024 ES	2023-2024 MS	2023-2024 HS	Est Student Count	ES to MS to HS Intact
1	Ballantyne	Community House	Ardrey Kell	509	1
2	Beverly Woods	Carmel	South Mecklenburg	402	1
3	Billingsville Cotswold	Alexander Graham	Myers Park	651	1
4	Dilworth (Sedgefield-Latta)	Sedgefield	Myers Park	523	1
5	Eastover	Sedgefield	Myers Park	274	1
6	Elizabeth Lane	South Charlotte	Providence	621	1
7	Elon Park	Community House	Ardrey Kell	608	1
8	Endhaven	Jay M Robinson	Ardrey Kell	238	
9		Quail Hollow	South Mecklenburg	150	
10		South Charlotte	South Mecklenburg	78	
11	First Ward Creative Arts	Sedgefield	Myers Park	156	1
12	Hawk Ridge	Community House	Ardrey Kell	242	
13		Jay M Robinson	Ardrey Kell	226	
14	Huntingtowne Farms	Carmel	South Mecklenburg	359	1
15	Marie G Davis	Marie G Davis	Myers Park	100	1
16	McAlpine	Jay M Robinson	Providence	167	
17		South Charlotte	South Mecklenburg	236	
18	McKee Rd	Jay M Robinson	Providence	527	1
19	Montclair	Alexander Graham	Myers Park	364	1
20	New ES South	Community House	Ardrey Kell	810	1
21	Olde Providence	Carmel	Myers Park	368	
22		South Charlotte	Providence	160	
23	Pineville	Quail Hollow	South Mecklenburg	658	1
24	Pinewood	Alexander Graham	Harding	228	
25			Myers Park	221	
26	Polo Ridge	Jay M Robinson	Ardrey Kell	636	1
27	Rea Farms K8	Rea Farms K8	Ardrey Kell	307	
28			Providence	38	
29	Selwyn	Alexander Graham	Myers Park	468	1
30	Sharon	Alexander Graham	Myers Park	320	
31		Carmel	Myers Park	243	
32	Smithfield	Quail Hollow	South Mecklenburg	487	1
33	South Pine	Kennedy	Olympic	108	
34		Quail Hollow	South Mecklenburg	72	
35		Southwest	Palisades	359	
36	Starmount Academy	Carmel	South Mecklenburg	332	1
37	Sterling	Quail Hollow	South Mecklenburg	478	1

# Current School Data for AK/MP/PR/SM: SES and Proximity



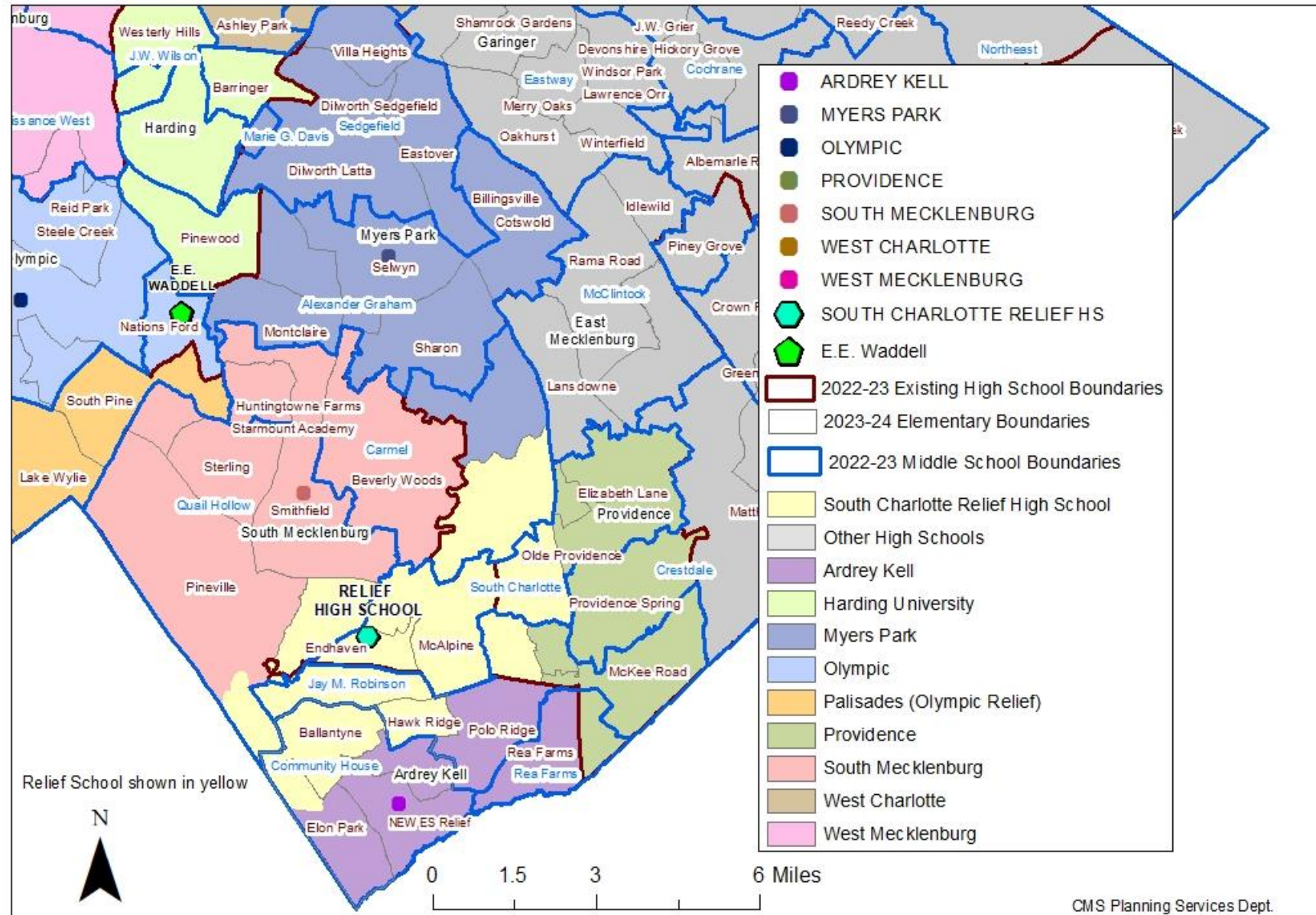
<b>Socioeconomic Status (SES)*</b>			
<b>Schools</b>	<b>High SES</b>	<b>Mid SES</b>	<b>Low SES</b>
Ardrey Kell	<b>78%</b>	<b>21%</b>	<b>1%</b>
Myers Park	<b>56%</b>	<b>25%</b>	<b>19%</b>
South Mecklenburg (incl. language magnet students)	<b>28%</b>	<b>25%</b>	<b>46%</b>

\* SES is an index measure based on family income, adult educational attainment, homeownership, household composition, and English language ability (Source: US Census Bureau American Community Survey, 5YR Estimates, Vintage 2020).

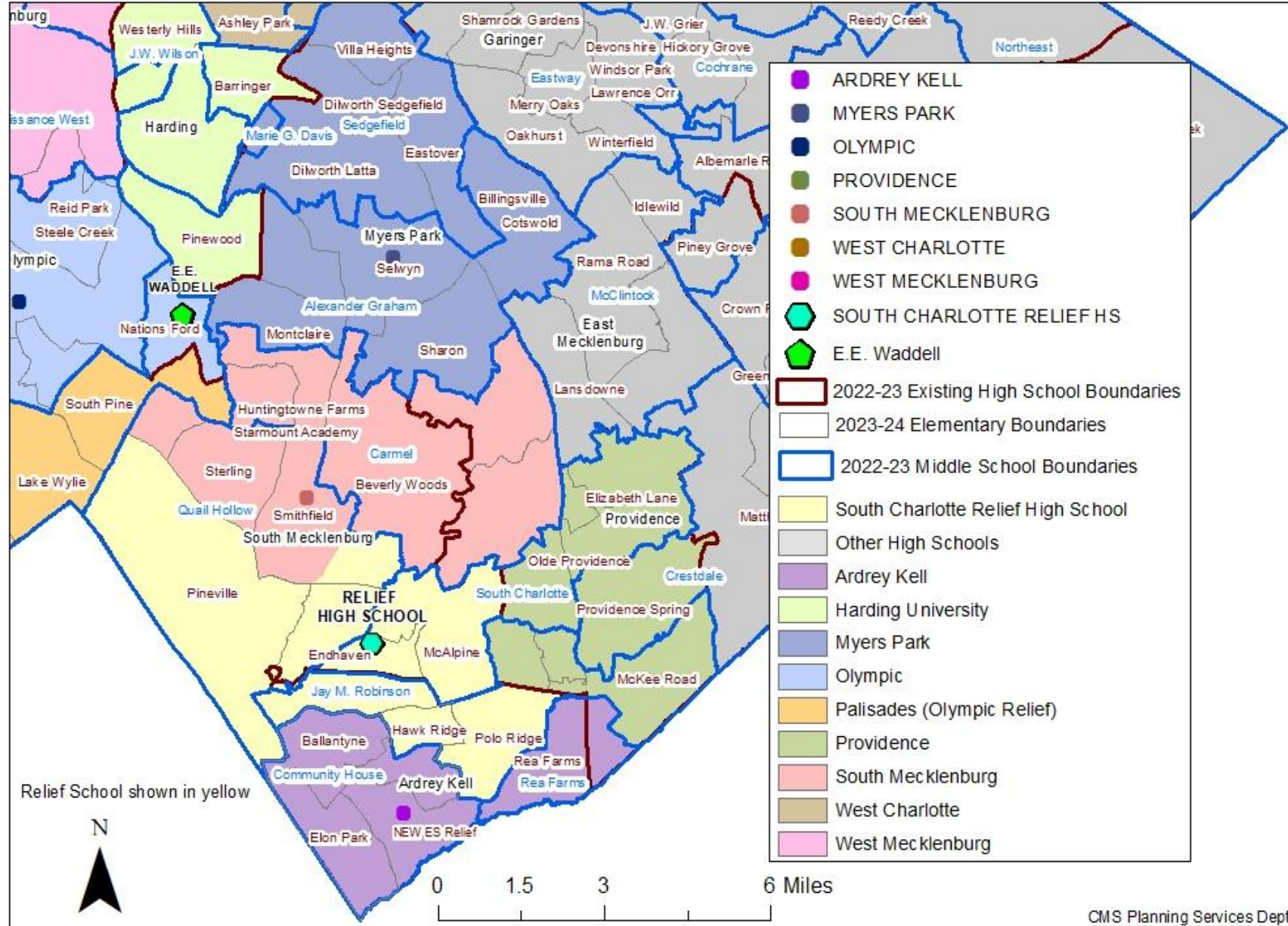
<b>Proximity Analysis</b>	<b><u>Travel Time (in minutes by car)</u></b>			<b><u>Travel Distance (in miles)</u></b>		
	<b>Min</b>	<b>Max</b>	<b>Mean</b>	<b>Min</b>	<b>Max</b>	<b>Mean</b>
Ardrey Kell	<b>1.3</b>	<b>12.6</b>	<b>6.1</b>	<b>0.3</b>	<b>5.3</b>	<b>2.5</b>
Myers Park	<b>2.9</b>	<b>16.4</b>	<b>9.9</b>	<b>0.6</b>	<b>8.4</b>	<b>3.7</b>
South Mecklenburg	<b>1.9</b>	<b>15.7</b>	<b>8.1</b>	<b>0.5</b>	<b>8.3</b>	<b>3.4</b>

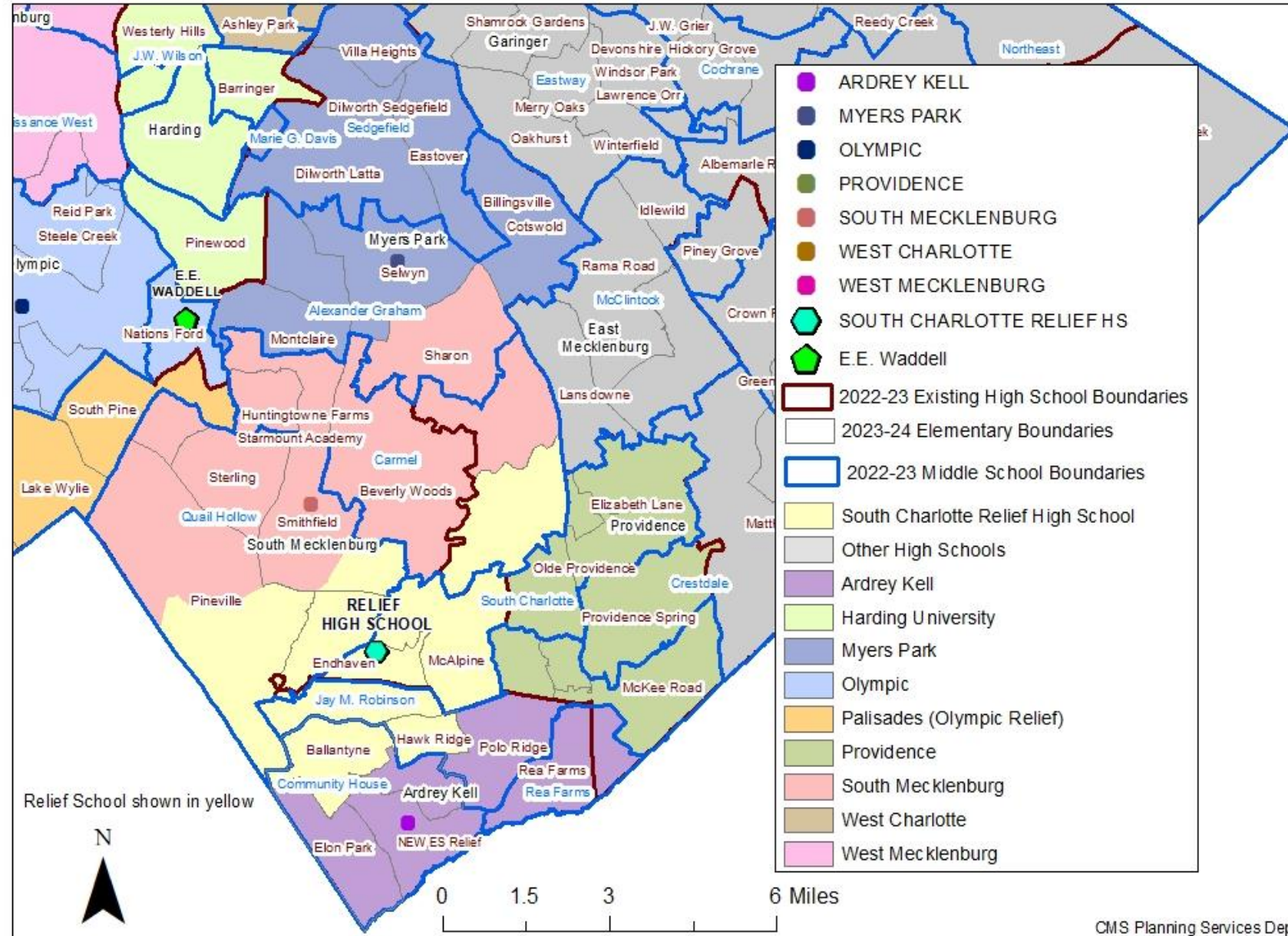
# **Blue, Orange, Yellow, and Violet Scenarios – with updated capacity utilization estimates**

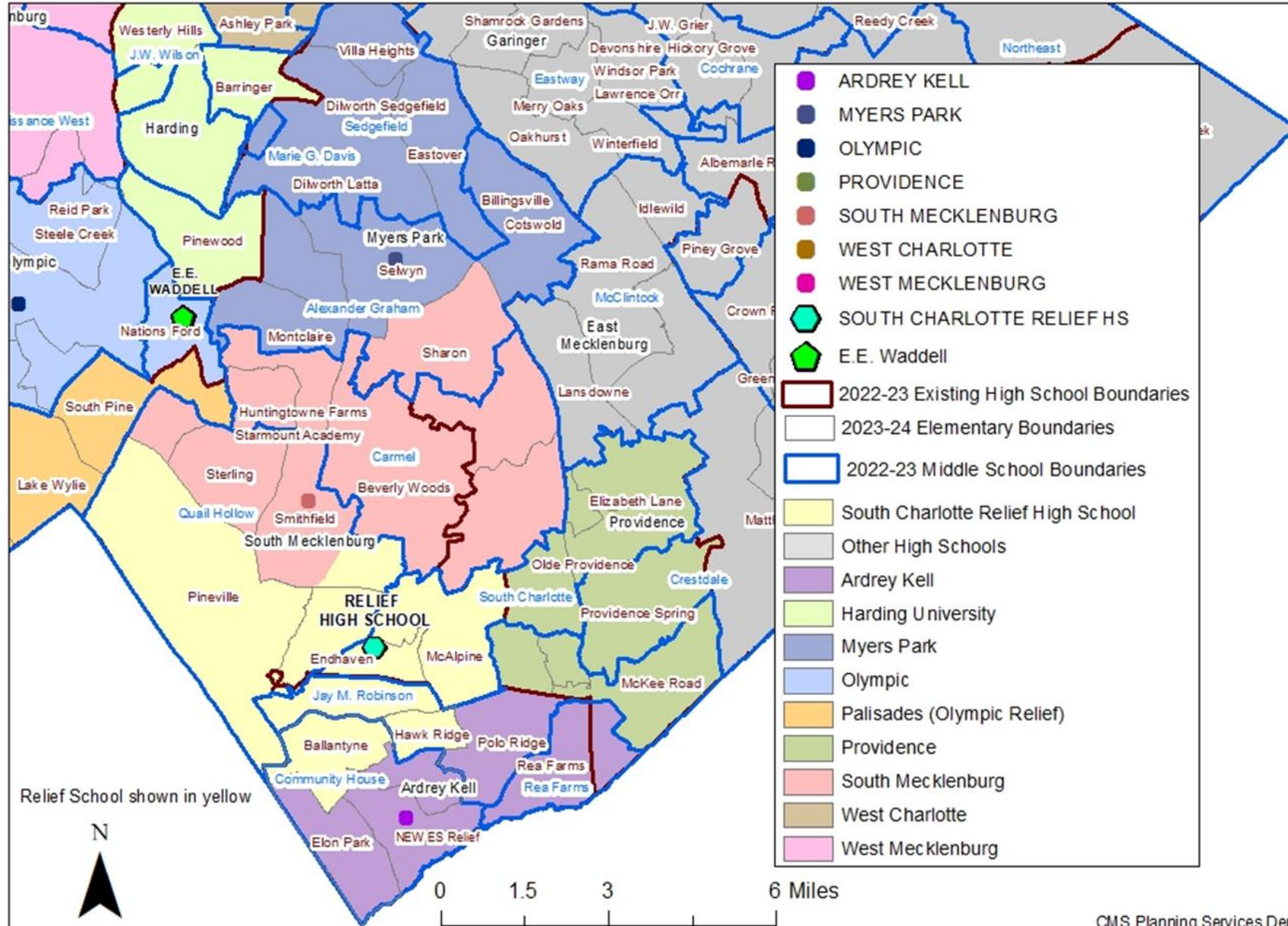
# South Charlotte Relief HS - Blue Scenario











# Scenario Comparison Utilization

Estimated Enrollment and Utilization (Y2)										
School	Estimated student capacity*	2022-2023 20th Day Enrollment	BLUE Scenario Estimated Enrollment (Y2)	BLUE Scenario Estimated Utilization (Y2)	ORANGE Scenario Estimated Enrollment (Y2)	ORANGE Scenario Estimated Utilization (Y2)	YELLOW Scenario Estimated Enrollment (Y2)	YELLOW Scenario Estimated Utilization (Y2)	VIOLET Scenario Estimated Enrollment (Y2)	VIOLET Scenario Estimated Utilization (Y2)
Ardrey Kell	2500	3543	2327	93%	2540	102%	2623	105%	2623	105%
Myers Park	3000	3615	3255	109%	3037	101%	2692	90%	2692	90%
Providence	2200	2061	1752	80%	2015	92%	2015	92%	2015	92%
South Mecklenburg	2700	3366	2781	103%	2803	104%	2834	105%	3148	117%
<b>New HS</b>	<b>2500</b>	<b>N/A</b>	<b>2457</b>	<b>98%</b>	<b>2178</b>	<b>87%</b>	<b>2409</b>	<b>96%</b>	<b>2095</b>	<b>84%</b>

\*This estimate is based on various factors such as the number of available/anticipated classrooms, staff allotments, resources, school management, and district standards. This is adjusted from the original estimates shared to more closely reflect the environments at the schools. The Board's goal is to move towards 100-classroom, 2500 student high schools.

# Scenario Comparison SES & Feeders

## Socioeconomic Status

School	CURRENT			BLUE			ORANGE			YELLOW			VIOLET		
	HIGH	MID	LOW	HIGH	MID	LOW	HIGH	MID	LOW	HIGH	MID	LOW	HIGH	MID	LOW
Ardrey Kell	78%	21%	1%	81%	19%	0%	73%	25%	2%	83%	17%	0%	83%	17%	0%
Myers Park	56%	25%	19%	53%	26%	21%	50%	28%	22%	49%	26%	25%	49%	26%	25%
Providence	79%	21%	0%	77%	23%	0%	78%	22%	0%	78%	22%	0%	78%	22%	0%
South Mecklenburg	30%	23%	47%	29%	14%	57%	48%	10%	42%	44%	14%	42%	49%	15%	36%
<b>New HS</b>	-	-	-	<b>66%</b>	<b>30%</b>	<b>4%</b>	<b>55%</b>	<b>27%</b>	<b>17%</b>	<b>47%</b>	<b>35%</b>	<b>18%</b>	<b>42%</b>	<b>37%</b>	<b>20%</b>
<b>Impact Area Average</b>	<b>61%</b>	<b>23%</b>	<b>17%</b>												
<b>District Average</b>	<b>27%</b>	<b>36%</b>	<b>38%</b>												

## Feeder Patterns (incl. Providence)

Current Feeder Pattern Summary			Result (+)	BLUE	ORANGE	YELLOW	VIOLET
ES to MS to HS	43	Total feeder patterns	Decrease	44	42	43	42
MS to HS	17	Total feeder patterns from MS to HS	Decrease	21	16	20	19
Intact ES to MS to HS	19	Total intact feeder patterns	Increase	18	20	18	19
Intact MS to HS	3	Total intact feeder patterns from MS to HS	Increase	1	4	2	3

# Scenario Comparison

## Home to School Distance



Average travel distance (miles)					
	Current	Blue	Orange	Yellow	Violet
Ardrey Kell	2.5	*	2.2	2.3	2.3
Myers Park	3.7	*	3.4	3.5	3.5
Providence	3.7	*	3.3	3.3	3.3
South Meck	3.4	*	3.6	3.3	3.7
New HS	-	*	3.6	3.6	3.2

\* Not calculated

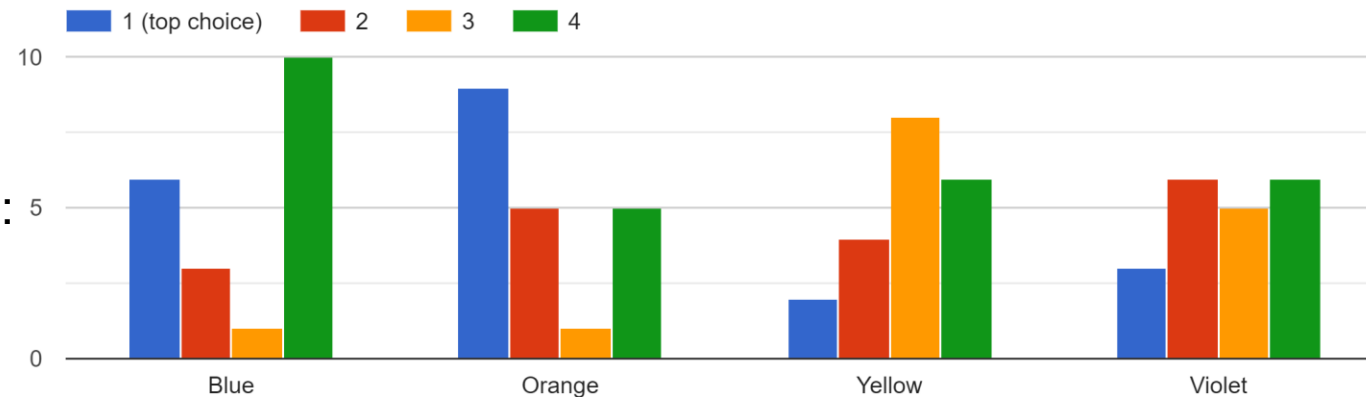
# Feedback on Blue, Orange, Yellow, and Violet Scenarios

# Feedback on Blue, Orange, Yellow, Violet

Scenario	Pros	Cons
Blue (“bimodal” response)	<ul style="list-style-type: none"> <li>- Evens out utilization for AK, MP, SM</li> <li>- All of Sharon to MP</li> </ul>	<ul style="list-style-type: none"> <li>- Y2 relief HS enrollment too high considering growth?</li> <li>- Worst option for feeders – creates splits, fewer intact feeders</li> <li>- Imbalance in South Meck and relief school SES</li> <li>- Providence doesn’t need relief</li> </ul>
Orange (top choice)	<ul style="list-style-type: none"> <li>- “Most balanced” across board priorities</li> <li>- Best option for feeder numbers</li> </ul>	
Yellow (least favorite)		<ul style="list-style-type: none"> <li>- Second worst for feeders</li> <li>- Utilization: Too much relief for MP and not enough for AK</li> <li>- Y2 relief HS enrollment too high</li> </ul>
Violet (mixed responses)	<ul style="list-style-type: none"> <li>- Second best for feeders</li> </ul>	<ul style="list-style-type: none"> <li>- Utilization: Too much relief for MP and not enough for AK</li> </ul>

Overall, travel distances and times go down. There is no significant difference between the scenarios.

Parent workgroup feedback (N=20):





# Latest Draft Scenarios

# RED A Scenario

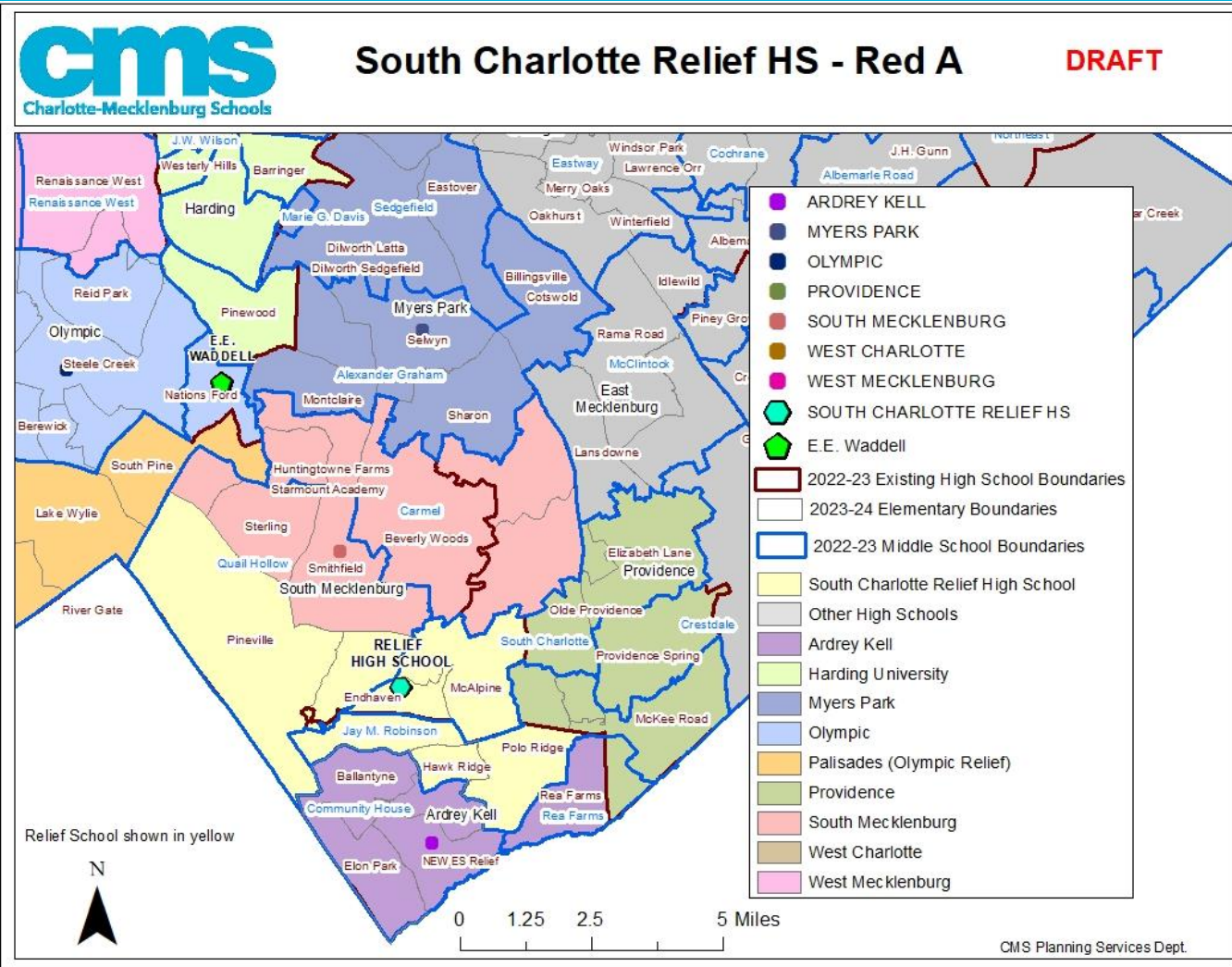
## Impact, Enrollment, SES



**Number of Students Impacted (Y1)** 2133

School	2022-23 20th Day Enrollment	2021-22 Capacity Utilization	RED A Estimated Enrollment (Y2)	RED A Planning Capacity (Y2)
Ardrey Kell	3557	142%	2509	100%
Myers Park	3615	121%	3027	101%
South Mecklenburg	3366	125%	2917	108%
Relief HS	N/A	N/A	2052	82%

School	HIGH SES	MID SES	LOW SES	HIGH SES	MID SES	LOW SES
Ardrey Kell	78%	21%	1%	73%	25%	2%
Myers Park	56%	25%	19%	50%	28%	22%
South Mecklenburg	28%	25%	46%	48%	10%	43%
Relief HS	N/A	N/A	N/A	56%	29%	15%



# RED A Scenario

## Feeders

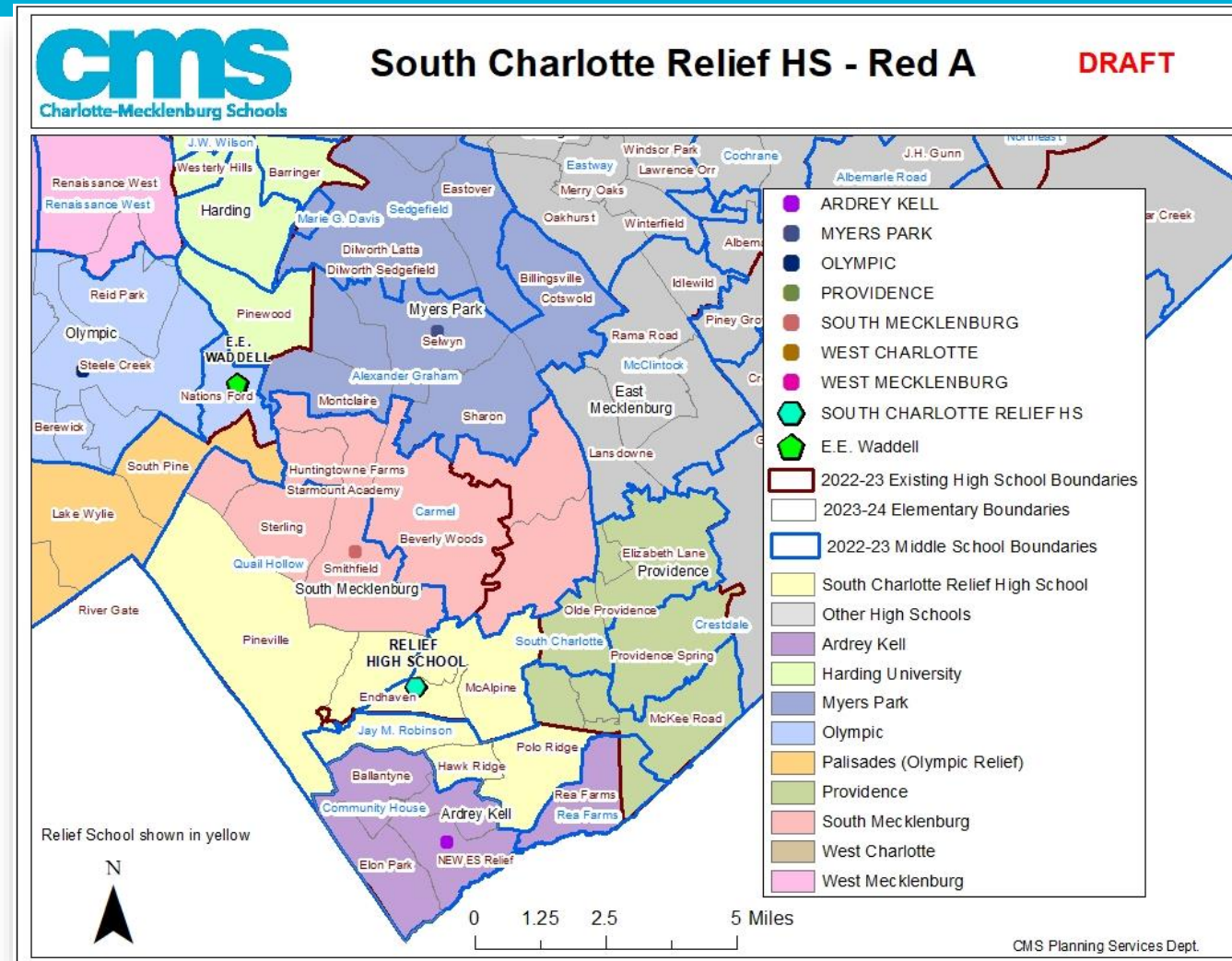
Number of Students Impacted (Y1)

2133

### Feeder changes:

- All of Carmel MS goes to South Meck HS
  - i.e., the southern section of Sharon ES and the northern section of Olde Providence ES are reassigned from Myers Park to South Meck.
- All of Pineville ES, Endhaven ES, and Polo Ridge ES, the section of McAlpine ES that currently goes to South Meck, and the northern part of Hawk Ridge (that goes to JM Robinson MS) to the relief HS
  - i.e., the southern section of Endhaven, the northern section of Hawk Ridge, and Polo Ridge (they currently all go to JM Robinson MS) are reassigned from Ardrey Kell to the relief HS.
  - Pineville, McAlpine, and the northern section of Endhaven are reassigned from South Meck to the relief HS.

Providence HS boundary stays the same.



# RED B Scenario

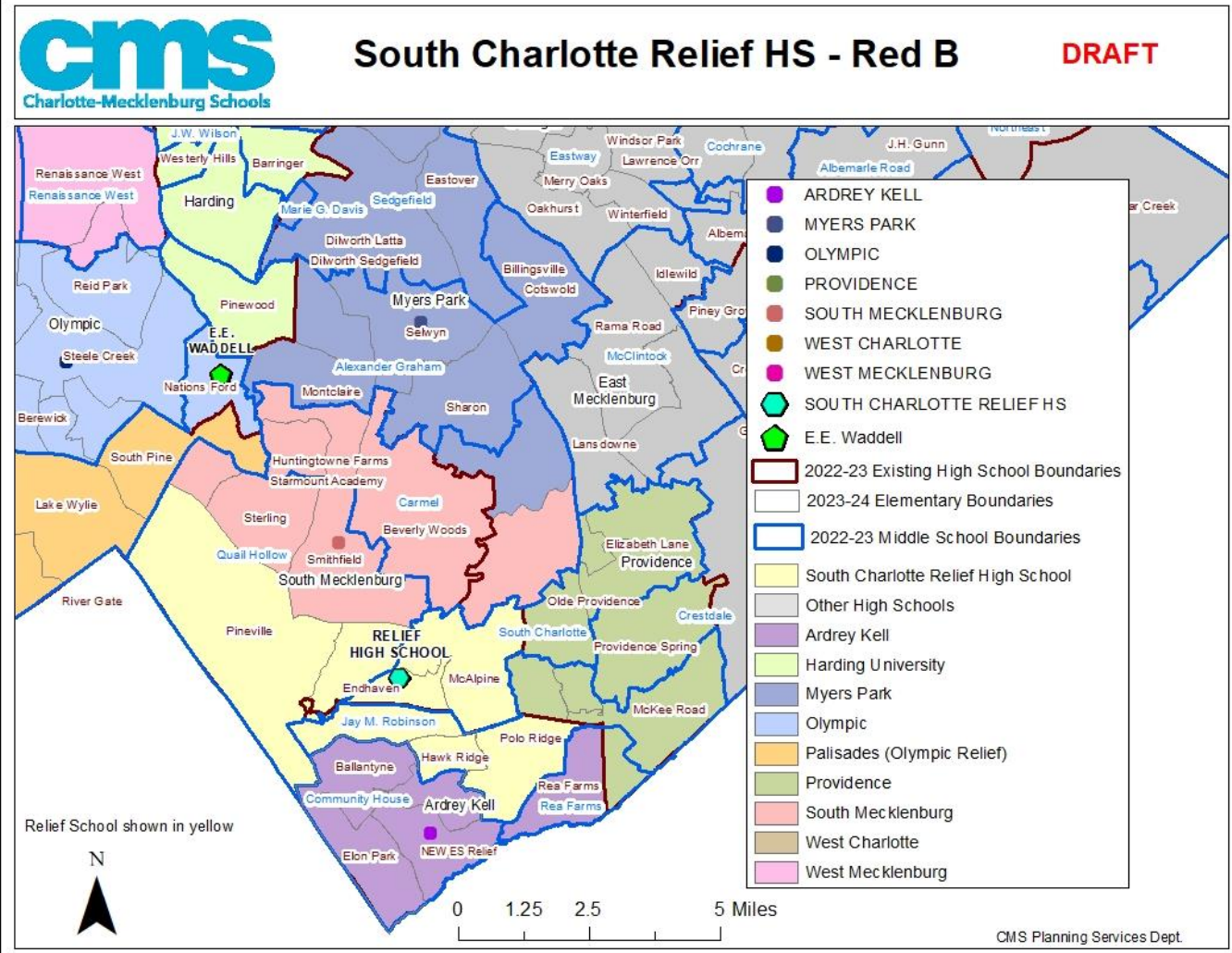
## Impact, Enrollment, SES



**Number of Students Impacted (Y1)** 1943

School	2022-23 20th Day Enrollment	2021-22 Capacity Utilization	RED B Estimated Enrollment (Y2)	RED B Planning Capacity (Y2)
Ardrey Kell	3557	142%	2509	100%
Myers Park	3615	121%	3244	108%
South Mecklenburg	3366	125%	2700	100%
Relief HS	N/A	N/A	2052	82%

School	HIGH SES	MID SES	LOW SES	HIGH SES	MID SES	LOW SES
Ardrey Kell	78%	21%	1%	73%	25%	2%
Myers Park	56%	25%	19%	53%	26%	21%
South Mecklenburg	30%	23%	47%	42%	11%	47%
Relief HS	N/A	N/A	N/A	56%	29%	15%

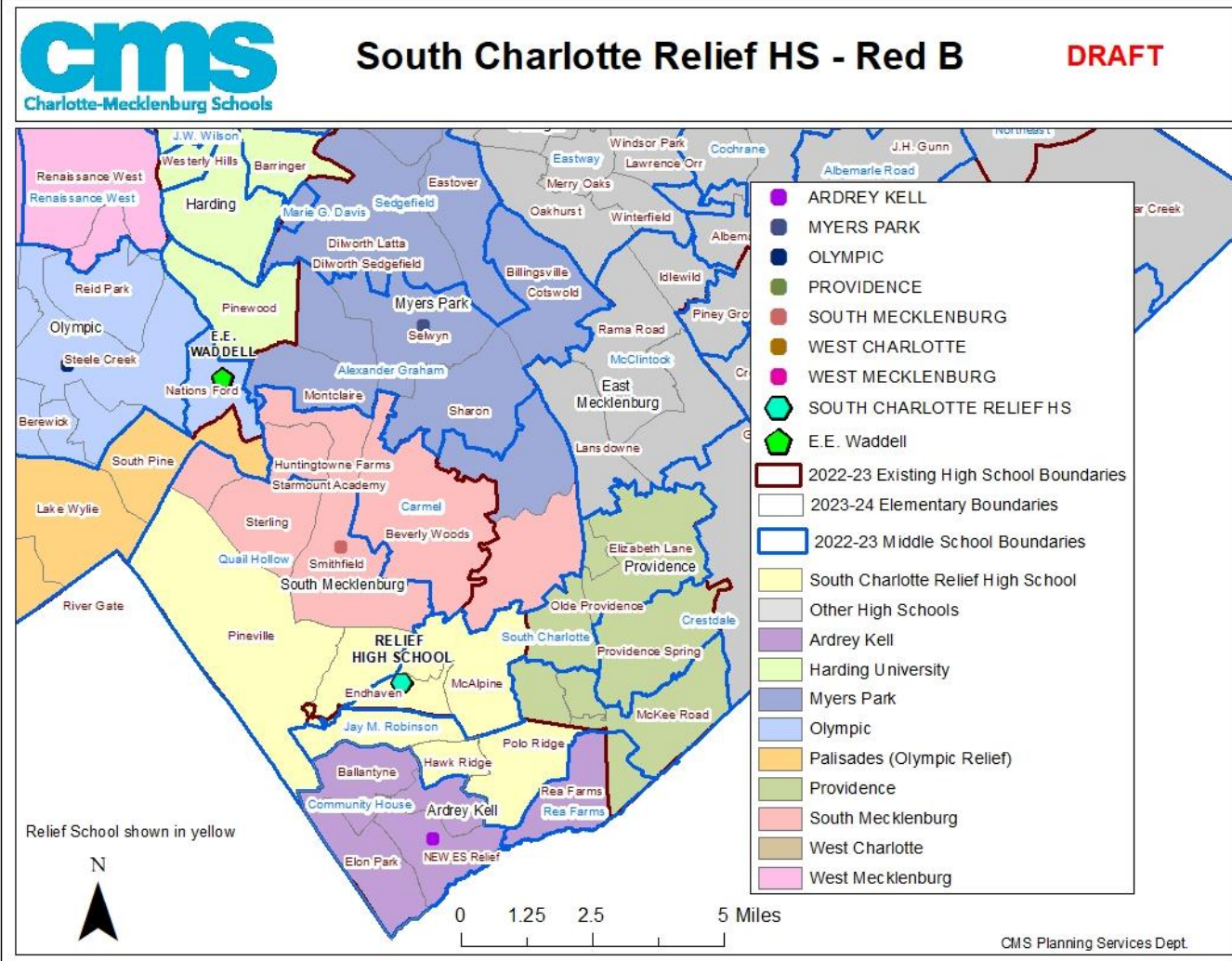


# RED B Scenario

## Feeders



The only difference between Red A and Red B is that, in Red B, the southern section of Sharon ES stays zoned for Myers Park. (maintains split with some Sharon ES students going to Carmel MS and others going to Alexander Graham)



# BROWN A Scenario

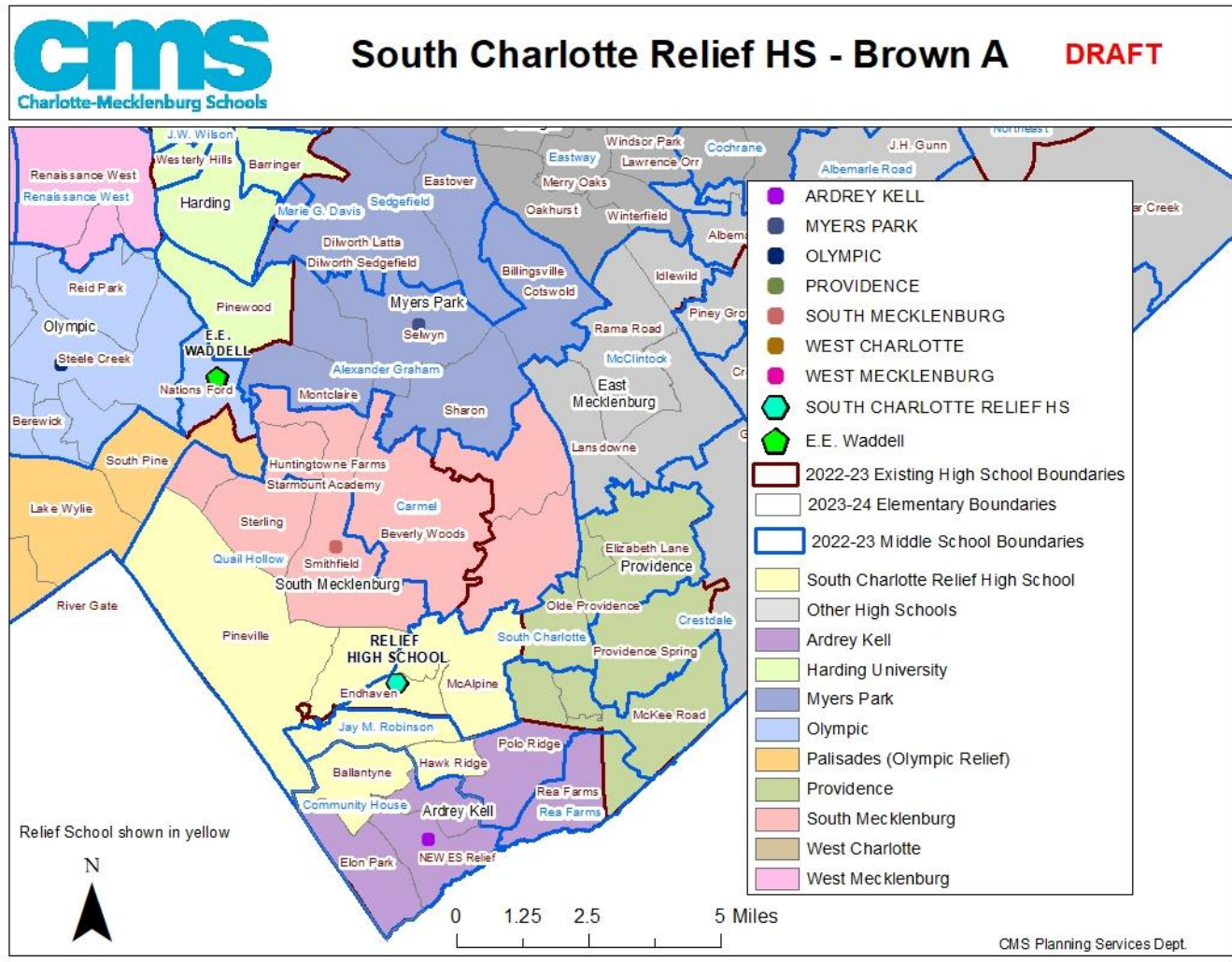
## Impact, Enrollment, SES



**Number of Students Impacted (Y1)** 2063

School	2022-23 20th Day Enrollment	2021-22 Capacity Utilization	BROWN A Estimated Enrollment (Y2)	BROWN A Planning Capacity (Y2)
Ardrey Kell	3557	142%	2592	<b>104%</b>
Myers Park	3615	121%	3027	<b>101%</b>
South Mecklenburg	3366	125%	2917	<b>108%</b>
<b>Relief HS</b>	<b>N/A</b>	<b>N/A</b>	1969	<b>79%</b>

School	HIGH SES	MID SES	LOW SES	HIGH SES	MID SES	LOW SES
Ardrey Kell	78%	21%	1%	83%	17%	0%
Myers Park	56%	25%	19%	50%	28%	22%
South Mecklenburg	30%	23%	47%	48%	10%	43%
<b>Relief HS</b>	<b>N/A</b>	<b>N/A</b>	<b>N/A</b>	<b>42%</b>	<b>40%</b>	<b>18%</b>



# BROWN A Scenario

## Feeders

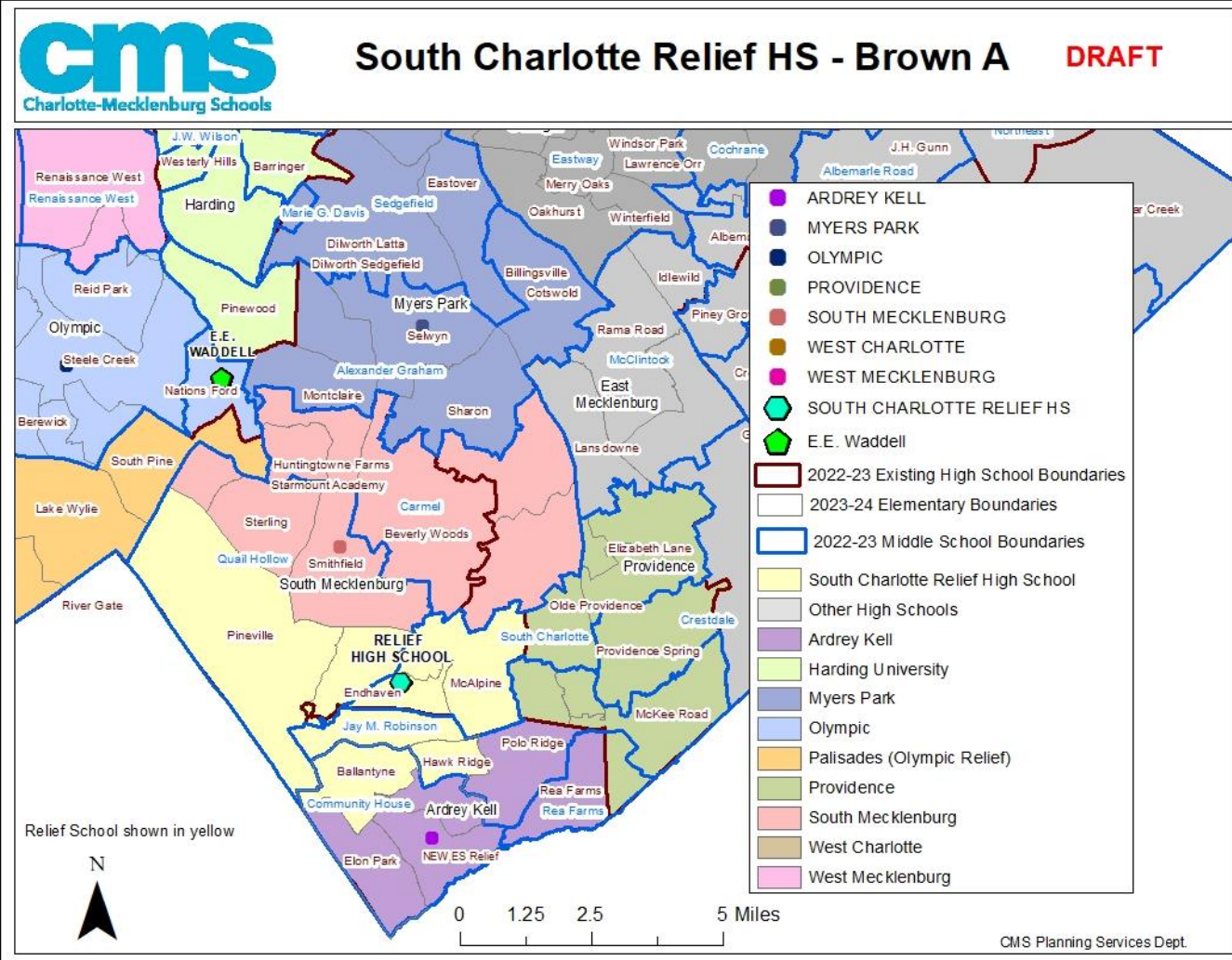


Number of Students Impacted (Y1)	2063
----------------------------------	------

Feeder changes:

- All of Carmel MS goes to South Meck HS
  - i.e. the southern section of Sharon ES and the northern section of Olde Providence ES are reassigned from Myers Park to South Meck.
- New Ballantyne (2023-24), the northern section of Hawk Ridge, Pineville, Endhaven, and the section of McAlpine that currently goes to South Meck go to the relief HS.
  - i.e. new Ballantyne, the southern section of Endhaven and the northern section of Hawk Ridge are reassigned from Ardrey Kell to the relief HS
  - Pineville, the northern section of Endhaven, and McAlpine are reassigned from South Meck to the relief HS.

Providence HS boundary stays the same.



# BROWN B Scenario

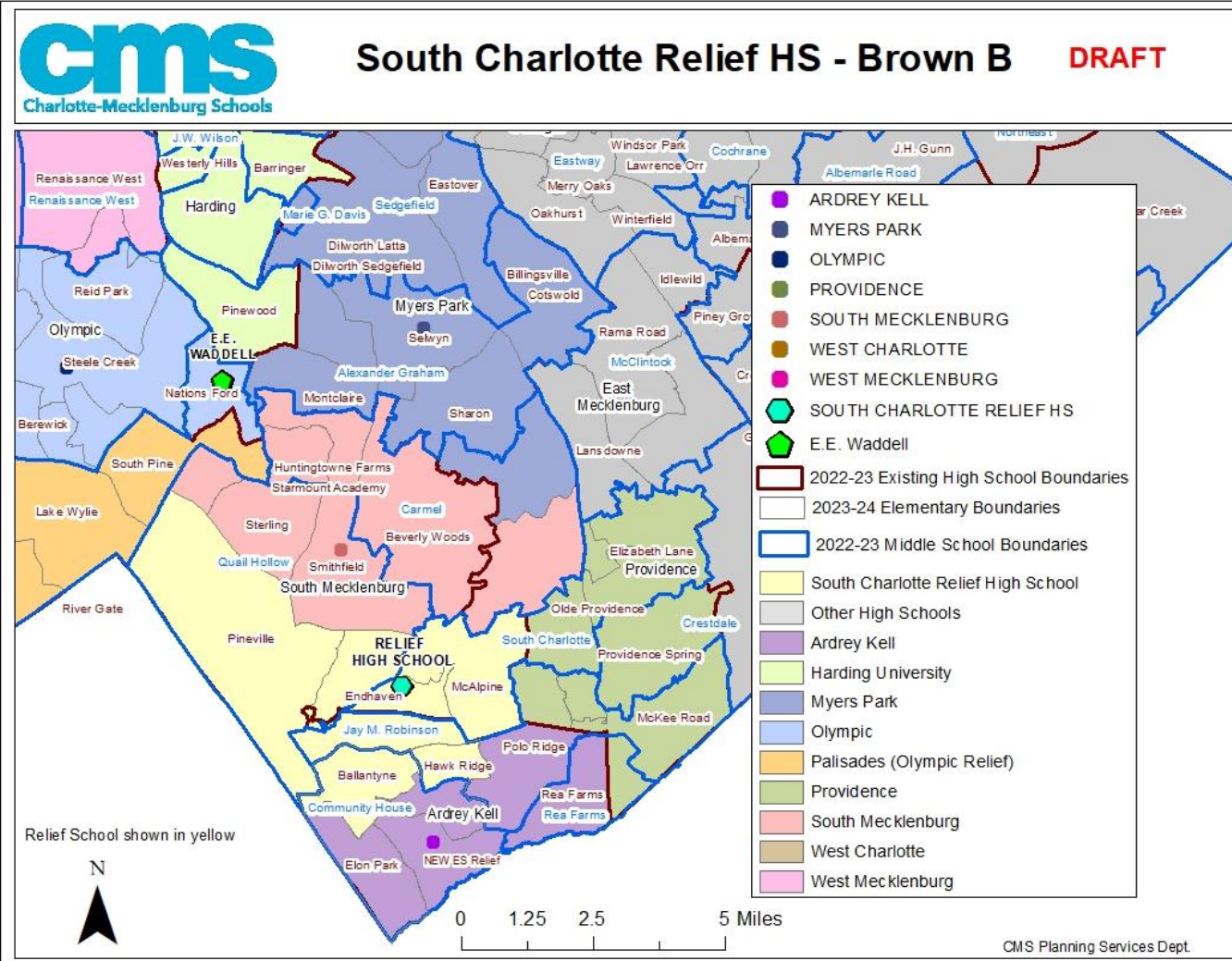
## Impact, Enrollment, SES



**Number of Students Impacted (Y1)** 1873

School	2022-23 20th Day Enrollment	2021-22 Capacity Utilization	BROWN B Estimated Enrollment (Y2)	BROWN B Planning Capacity (Y2)
Ardrey Kell	3557	142%	2592	<b>104%</b>
Myers Park	3615	121%	3244	<b>108%</b>
South Mecklenburg	3366	125%	2700	<b>100%</b>
Relief HS	N/A	N/A	1969	<b>79%</b>

School	HIGH SES	MID SES	LOW SES	HIGH SES	MID SES	LOW SES
Ardrey Kell	78%	21%	1%	83%	17%	0%
Myers Park	56%	25%	19%	53%	26%	21%
South Mecklenburg	30%	23%	47%	42%	11%	47%
Relief HS	N/A	N/A	N/A	<b>42%</b>	<b>40%</b>	<b>18%</b>





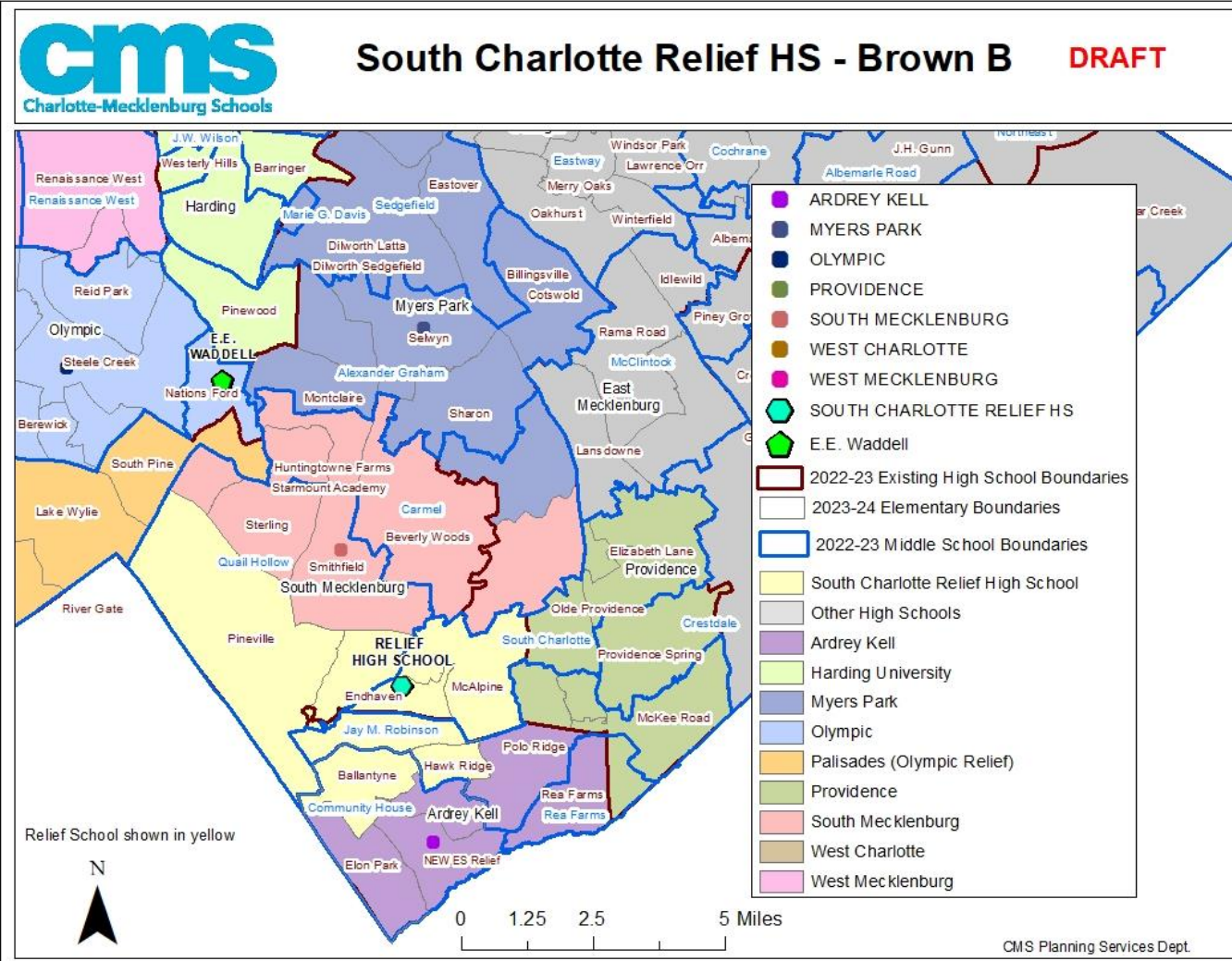
# BROWN B Scenario

## Feeders



<b>Number of Students Impacted (Y1)</b>	1873
---	------

The only difference between Brown A and Brown B is that, in Brown B, the southern section of Sharon ES stays zoned for Myers Park.  
 (maintains split with some Sharon ES students going to Carmel MS and others going to Alexander Graham)



# BROWN C Scenario

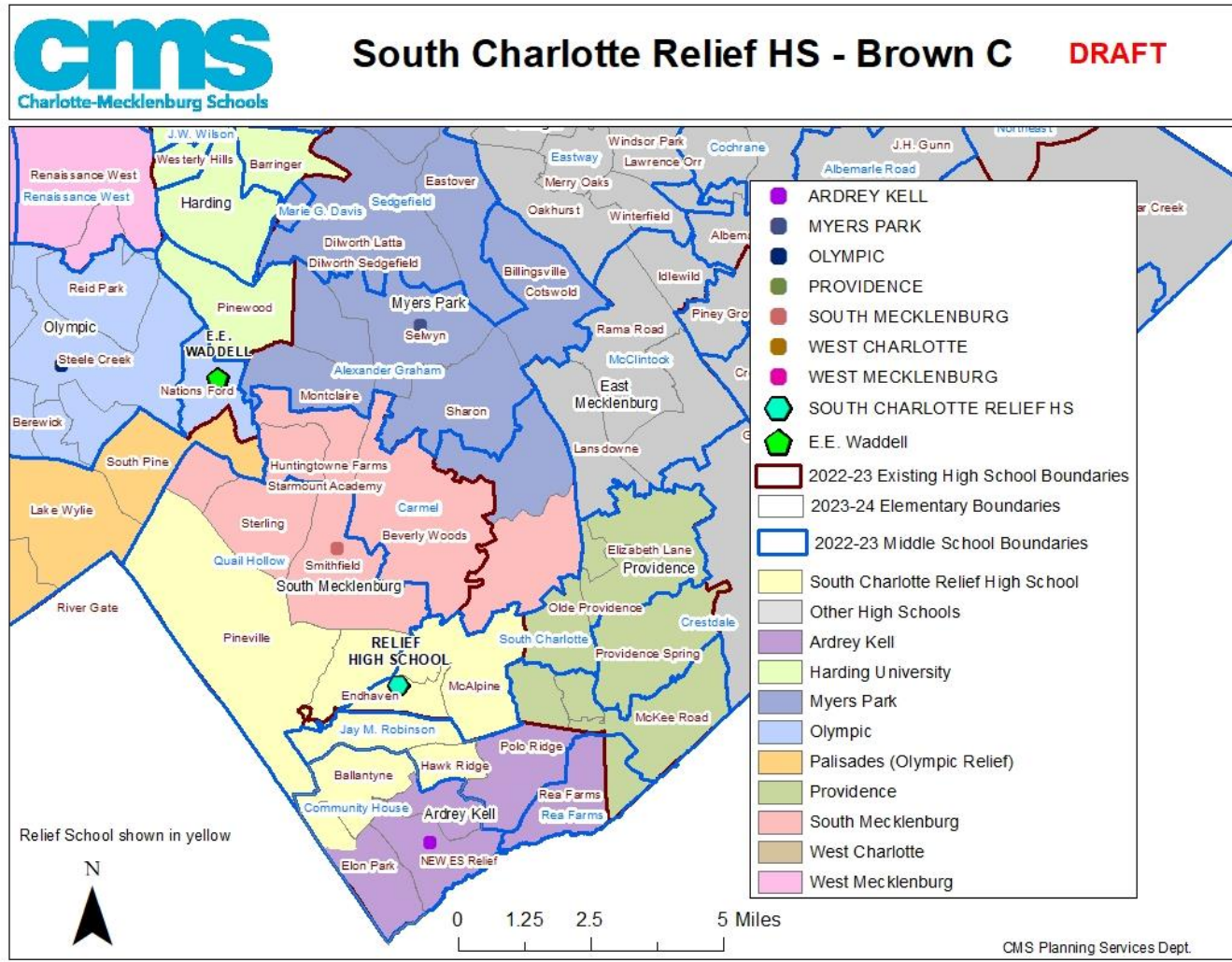
## Impact, Enrollment, SES



Number of Students Impacted (Y1) 2090

School	2022-23 20th Day Enrollment	2021-22 Capacity Utilization	BROWN C Estimated Enrollment (Y2)	BROWN C Planning Capacity (Y2)
Ardrey Kell	3557	142%	2327	93%
Myers Park	3615	121%	3244	108%
South Mecklenburg	3366	125%	2700	100%
Relief HS	N/A	N/A	2234	89%

School	HIGH SES	MID SES	LOW SES	HIGH SES	MID SES	LOW SES
Ardrey Kell	78%	21%	1%	81%	19%	0%
Myers Park	56%	25%	19%	53%	26%	21%
South Mecklenburg	30%	23%	47%	42%	11%	47%
Relief HS	N/A	N/A	N/A	49%	35%	16%



# BROWN C Scenario

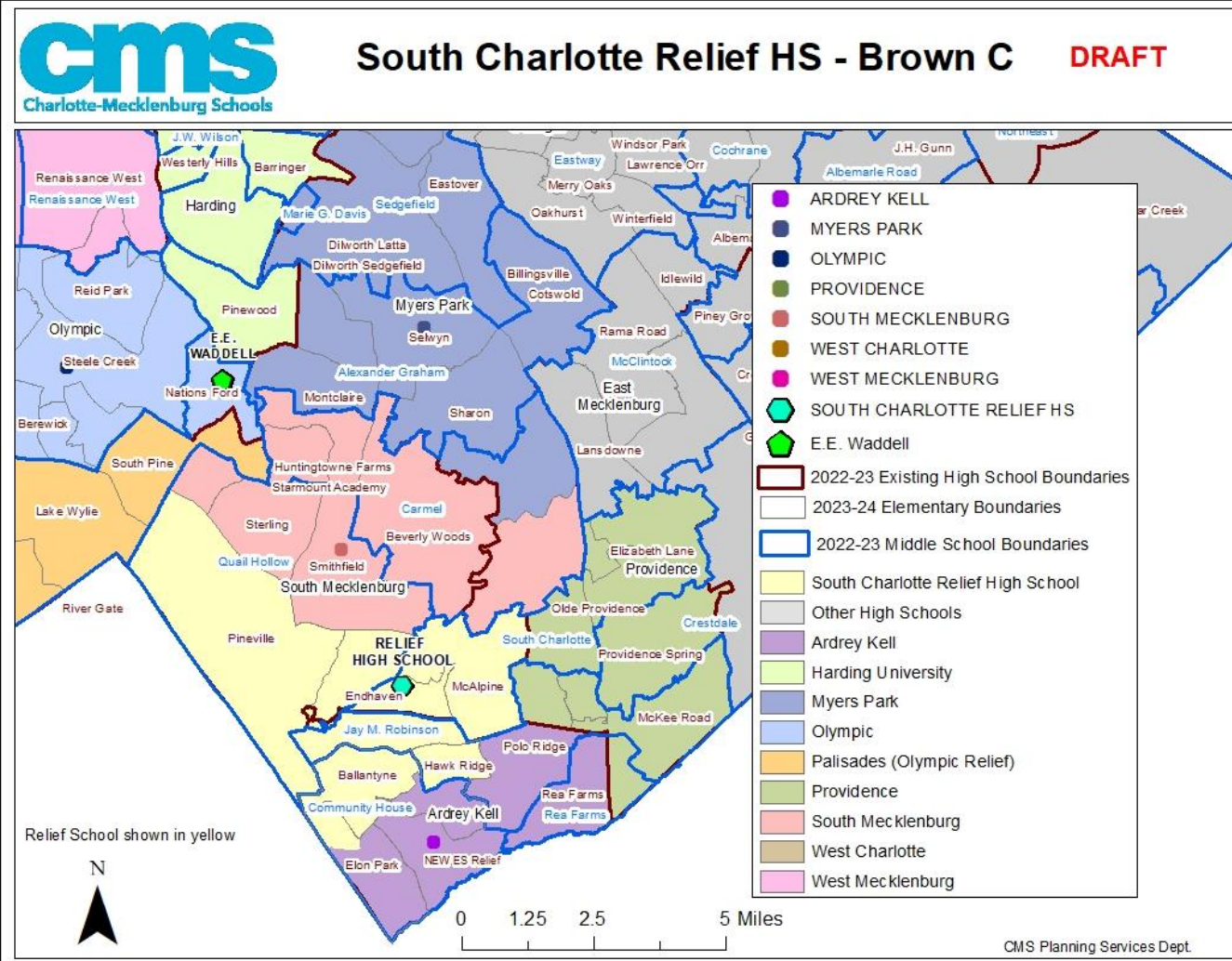
## Feeders



Number of Students Impacted (Y1)	2090
----------------------------------	------

The only difference between Brown B and Brown C is that Brown C uses the current Ballantyne ES boundary and reassigns that area from Ardrey Kell to the relief HS to provide Ardrey Kell with additional relief.

i.e., the northern section of the new Elon Park boundary would go to the relief HS (both Elon Park and Ballantyne would still go to Community House together)



# Comparing Results:

## Red A & B, Brown A, B & C Scenarios

# Estimated Enrollment/Capacity (Y2)



Estimated number of students impacted during the first year:

RED A	RED B	BROWN A	BROWN B	BROWN C
2133	1943	2063	1873	2090

## Estimated Enrollment and Utilization (Y2)

Schools	2022-2023 M1 Enrollment	RED_A (Estimated Enrollment) with Magnet/Transfers	RED_B (Estimated Enrollment) with Magnet/Transfers	BROWN_A (Estimated Enrollment) with Magnet/Transfers	BROWN_B (Estimated Enrollment) with Magnet/Transfers	BROWN_C (Estimated Enrollment) with Magnet/Transfers
Ardrey Kell	3529	2509	2509	2592	2592	2327
Myers Park	3605	3027	3244	3027	3244	3244
South Meck	3362	2917	2700	2917	2700	2700
New Relief HS	N/A	2052	2052	1969	1969	2234

Schools	Planning Capacity	Current Utilization	RED_A (Estimated Utilization)	RED_B (Estimated Utilization)	BROWN_A (Estimated Utilization)	BROWN_B (Estimated Utilization)	BROWN_C (Estimated Utilization)
Ardrey Kell	2500	141%	100%	100%	104%	104%	93%
Myers Park	3000	120%	101%	108%	101%	108%	108%
South Meck	2700	125%	108%	100%	108%	100%	100%
New Relief HS	2500	n/a	82%	82%	79%	79%	89%

# Socioeconomic Status



## Estimated Socioeconomic Status by Option Scenario

	CURRENT			RED A			RED B			BROWN A			BROWN B			BROWN C		
School	HIGH	MID	LOW	HIGH	MID	LOW	HIGH	MID	LOW	HIGH	MID	LOW	HIGH	MID	LOW	HIGH	MID	LOW
Ardrey Kell	78%	21%	1%	73%	25%	2%	73%	25%	2%	83%	17%	0%	83%	17%	0%	81%	19%	0%
Myers Park	56%	25%	19%	50%	28%	22%	53%	26%	21%	50%	28%	22%	53%	26%	21%	53%	26%	21%
South Meck	28%	25%	46%	48%	10%	43%	42%	11%	47%	48%	10%	43%	42%	11%	47%	42%	11%	47%
New HS	-	-	-	56%	29%	15%	56%	29%	15%	42%	40%	18%	42%	40%	18%	49%	35%	16%
Area* Average	60%	23%	17%															
District Average	29%	34%	36%															

Source: 2022-23 SES distribution (20<sup>th</sup>-day student data)

# Feeder Patterns

Feeders	Improvement Measure	Current	Red A	Red B	Brown A	Brown B	Brown C
<b>Total Feeder Count</b>							
ES to MS to HS	Decrease	37	37	37	37	37	38
MS to HS	Decrease	15	15	16	17	18	18
<b>Intact Feeder Count</b>							
ES to MS to HS	Increase	19	19	19	19	19	18
MS to HS	Increase	3	3	2	2	1	1



# Home to School Distance

## Average travel distance (miles)

	Current	Red A	Red B	Brown A	Brown B	Brown C
Ardrey Kell	2.5	2.2	2.2	2.3	2.3	2.2
Myers Park	3.7	3.3	3.5	3.3	3.5	3.5
South Meck	3.4	3.5	3.3	3.5	3.3	3.3
New HS	-	3.7	3.7	3.2	3.2	3.3





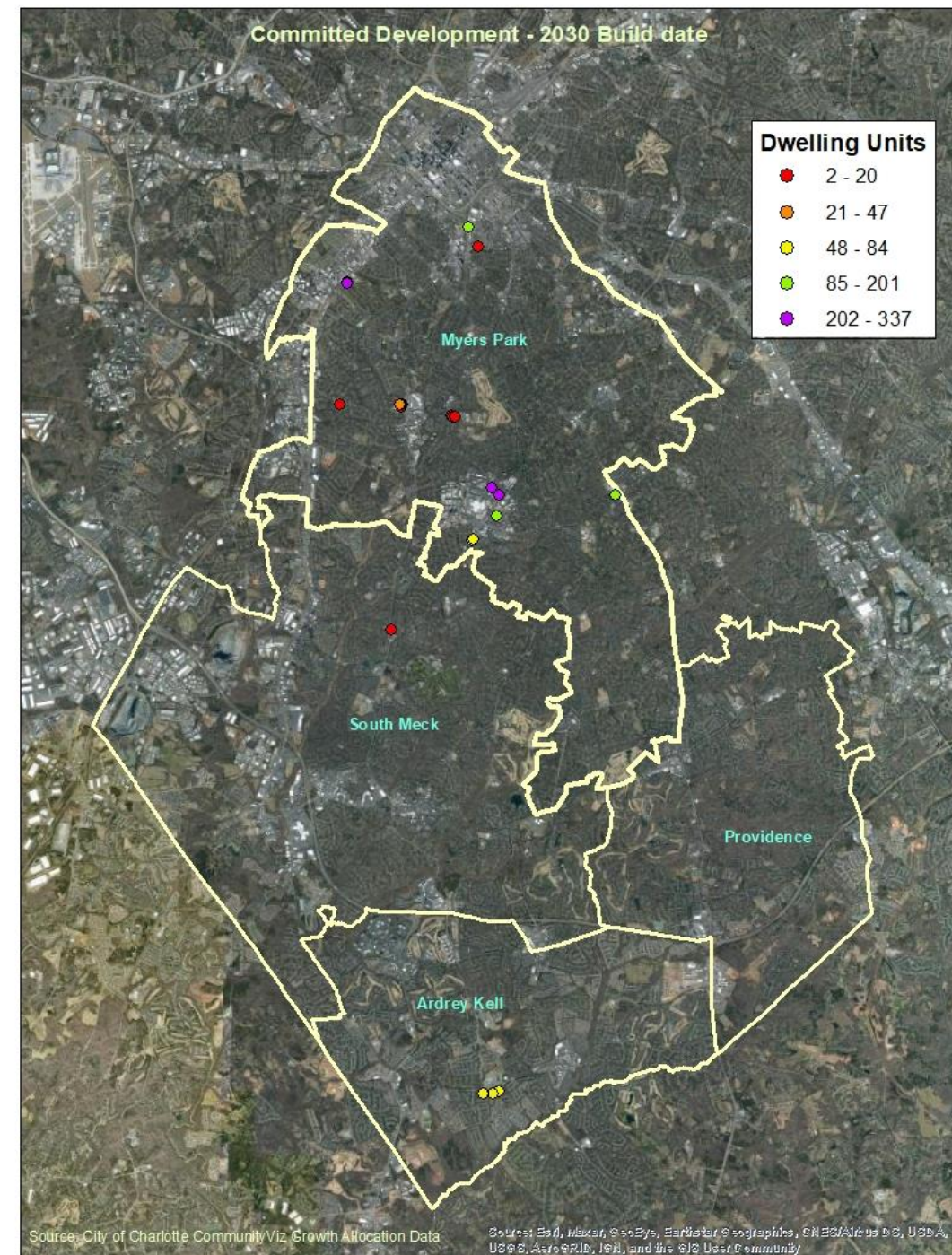
# Estimated Growth

- Grade progressions – grade sizes in upcoming 5-10 years (current elementary and middle school students)
  - Larger cohorts in the pipeline for South Meck
  - Smaller cohorts for Ardrey Kell
  - Steady cohorts for Myers Park
- Anticipated student growth based on residential development (see next slides)

# Committed Development – by 2030 Build date

**Committed development:** Lots or parcels that have been approved for development but not yet built in the region.

	Dwelling Units	ES	MS	HS	Total Students
<b>Ardrey Kell</b>					
SF Detached	16	4	2	4	10
SF Attached	204	31	13	24	68
Multifamily	NA	NA	NA	NA	NA
<b>Myers Park</b>					
SF Detached	10	3	1	1	5
SF Attached	48	1	1	1	3
Multifamily	2061	189	88	101	378
<b>South Meck</b>					
SF Detached	NA	NA	NA	NA	NA
SF Attached	20	3	1	2	6
Multifamily	NA	NA	NA	NA	NA



Source: 2019 City of Charlotte CommunityViz Growth Allocation data that was developed as part of the Charlotte Future 2040 Comprehensive Plan

# Ballantyne Reimagined

## Phase 1 (5-6 years from 2021)

## Phase 2 (6-12 year Period)

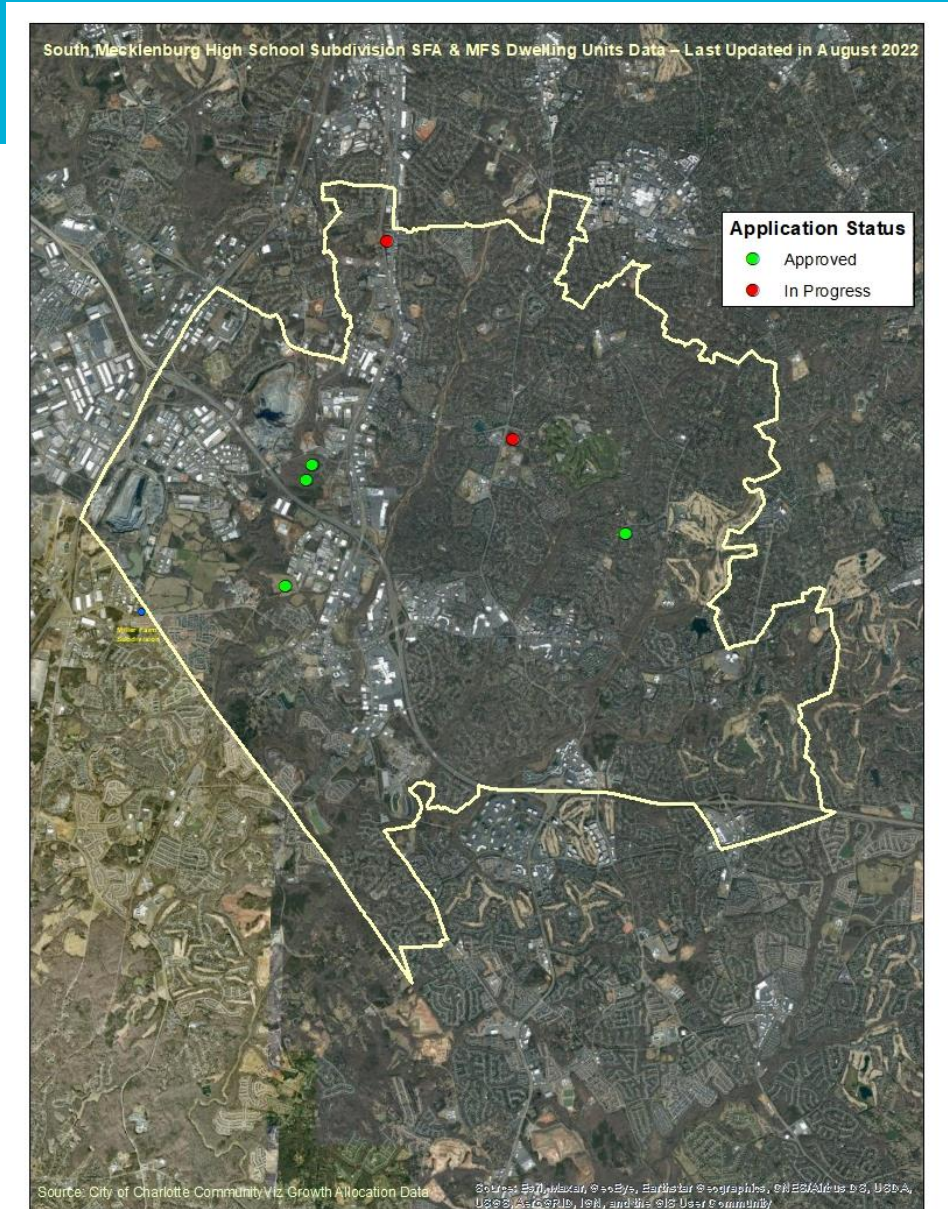
## Phase 3 (would require new Traffic Impact Study and major transportation event)

	1030 multi-family units	1050 multi-family units	300 single-family attached units	1890 multi-family units
Estimated total student yield	355	361	103	651
Estimated elementary student yield	203	207	59	373
Estimated middle school student yield	75	77	22	139
Estimated high school student yield	75	77	22	139

# South Mecklenburg High School Subdivision Data –

Last Updated in August 2022

	<b>352 single-family attached</b>	<b>344 multi-family units</b>
Estimated total student yield	117	118
Estimated elementary student yield	54	68
Estimated middle school student yield	22	25
<b>Estimated high school student yield</b>	<b>41</b>	<b>25</b>



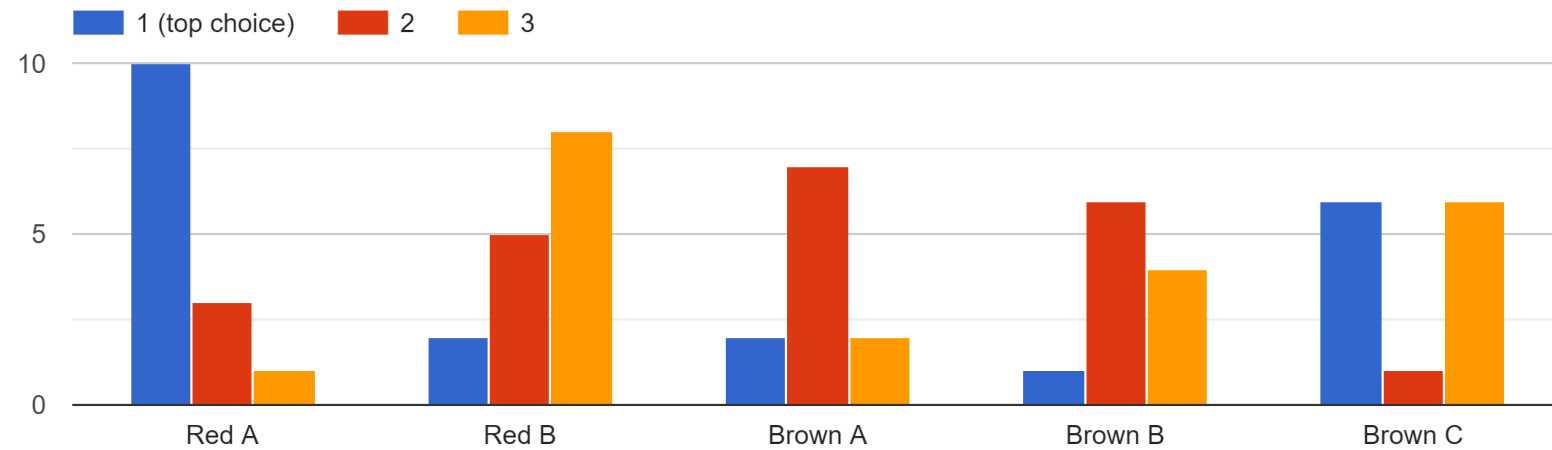
Source: City of Charlotte Subdivision Data

# Feedback on Red and Brown iterations

# Responses from parent work group and district + school leaders (N=23)

- **Red A top choice**
- Red B bottom choice
- Brown A most likely to be 2<sup>nd</sup> choice
- Brown B least likely to be 1<sup>st</sup> choice
- Brown C split/bimodal response

If we had to present only three scenarios to the public, which do you think should be chosen? (in order of preference)



# Responses from parent work group and district + school leaders (N=23)

Scenario	Pro	Con
Red A	<ul style="list-style-type: none"> <li>- Best option for number of feeder (neutral impact)</li> <li>- “All of Carmel to South Meck”</li> <li>- Slightly less concentrated high SES at AK</li> </ul>	<ul style="list-style-type: none"> <li>- Insufficient relief for SM?</li> </ul>
Red B	<ul style="list-style-type: none"> <li>- “All of Sharon stays at MP”</li> <li>- Slightly less concentrated high SES at AK</li> </ul>	<ul style="list-style-type: none"> <li>- Insufficient relief for MP?</li> </ul>
Brown A	<ul style="list-style-type: none"> <li>- “All of Carmel to South Meck”</li> <li>- Lowest average travel distance</li> </ul>	<ul style="list-style-type: none"> <li>- Insufficient relief for AK and SM?</li> <li>- Slightly more concentrated high SES at AK</li> </ul>
Brown B	<ul style="list-style-type: none"> <li>- “All of Sharon stays at MP”</li> <li>- Most balanced SES for MP, SM, relief school</li> </ul>	<ul style="list-style-type: none"> <li>- Insufficient relief for AK and MP?</li> <li>- Slightly more concentrated high SES at AK</li> </ul>
Brown C	<ul style="list-style-type: none"> <li>- “All of Sharon stays at MP”</li> <li>- Most relief for AK</li> </ul>	<ul style="list-style-type: none"> <li>- Insufficient relief for MP?</li> <li>- Slightly more concentrated high SES at AK</li> <li>- Worst overall for number of feeders incl. new Elon split</li> </ul>

Other comments:

- Opening relief high school with too few students?
- Clarify grandfathering/legacy enrollment
- Clarify what is happening with IB
- All of McAlpine (incl. section that goes to Providence) to relief HS?
- All of Rea Farms to AK?
- OP to Providence?
- What will the impact of new program at Waddell be on enrollment at SM (and other schools)?
- Changes in school capacity

# Responses from public survey (N=810)

92% of respondents were parents of a CMS student, 8% were CMS employees, 3% were students, 3% “other” including future parent or general community member (respondents may have multiple associations)

Top schools represented (respondents may have multiple associations):

- **Ardrey Kell** (47%)
- Carmel (29%)
- **Myers Park** (24%)
- Olde Providence (24%)
- JM Robinson (16%)
- Community House (11%)
- Polo Ridge (11%)
- **South Meck** (9%)
- Sharon (9%)

Need to focus on getting input on schools that are less represented so far

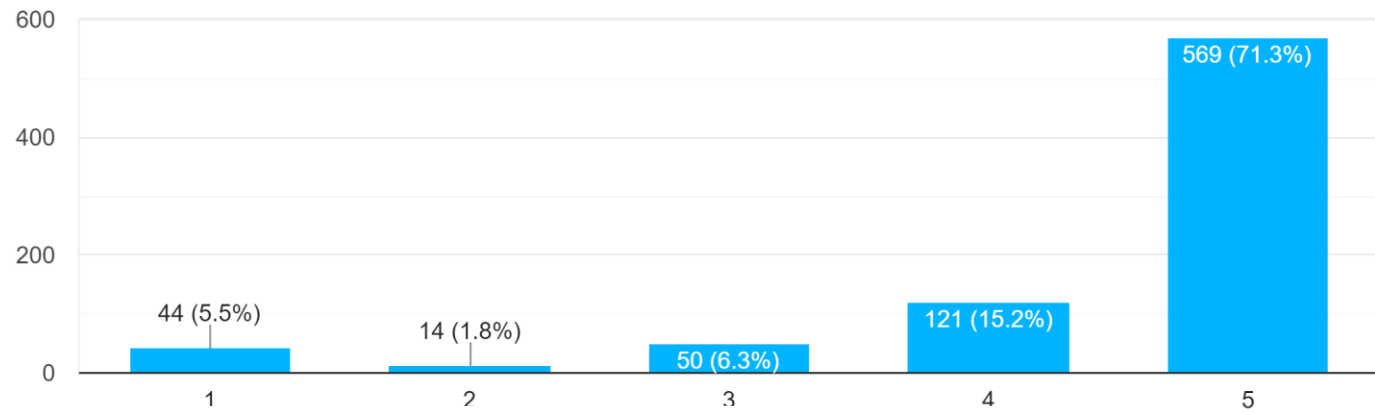


# Responses from public survey (N=810)

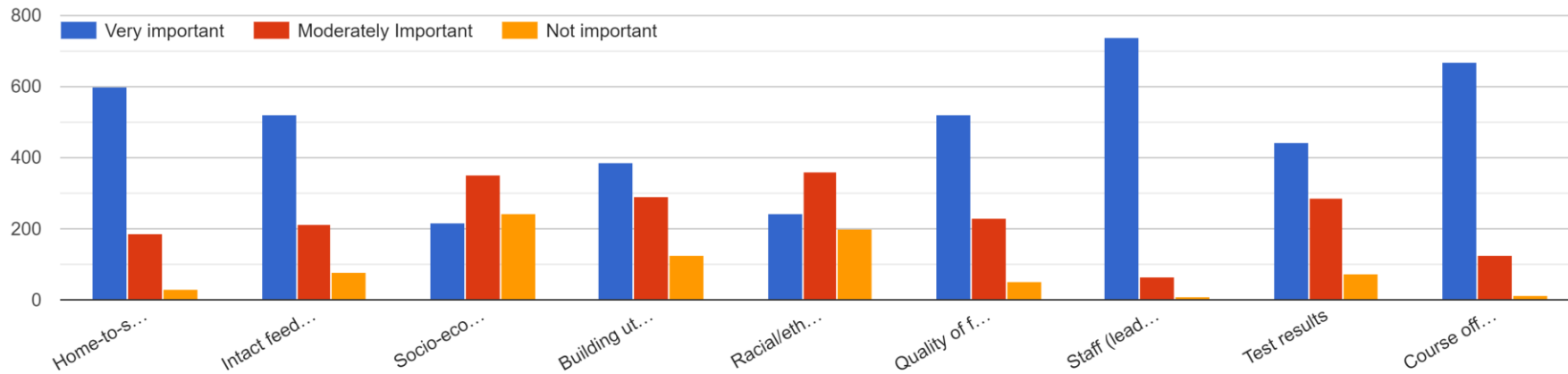
Most respondents are very satisfied with their current school assignment.

Out of the four board priorities, respondents felt that home-to-school distance was the most important, followed by intact feeders. Outside of board priorities, school staff and course offerings are considered the most important factors in school selection.

How satisfied are you with your current school assignment? (if applicable)  
798 responses



How important are each of the following factors to you in school selection or assignment?



# Responses from public survey (N=810)

What other things should the district consider when drawing school boundaries and preparing to open the new school? Major themes:

- **People don't want to leave their current school.** Time and money investment in current schools.
- **Support for a particular board priority**, e.g. not going over 100% capacity, not creating more splits, keeping certain elementary or middle school students together, creating/maintaining SES balance, or ensuring students can go to their closest school.
- Concerns about growth and schools becoming overcrowded again
- Questions about why Providence boundaries are not changing - request of OP to Providence; lack of diversity
- Sensitivity to those who have recently been redistricted, such as Ballantyne and Rea Farms.
- Residency checks (for AK)
- Making sure CMS hears all voices
- Greater transparency in the process, sharing more information

# Responses from public survey (N=810)

How can we best support students in their transition to the new school? What do you see as your/your school's/your department's role in supporting this transition?

- By far, the most common theme was related to **legacy enrollment for 11<sup>th</sup> and 12<sup>th</sup> graders/not changing assignments for students already enrolled in high school due to the academic and social disruption/option to stay.**
- Some MP parents asked if they could send their 9<sup>th</sup> grader to SM next year if they were going to be rezoned for SM in 2024.
- Keeping siblings together
- Ensuring schools have equal course offerings and quality of teachers
- Hire and name relief school leadership early
- Adequate notice of rezoning

# Upcoming Public Survey/Engagement

- Show Red A and Brown A with board priority data?
- Create another scenario based on feedback?  
*If all of Sharon stays at MP, how else would we give relief to MP? Are there any other alternatives such as redistricting part of MP to East Meck?*  
*If all of OP to Providence, this would add around 70 students to Providence per grade, bringing them up to around 2,300, which is 115% if their capacity is set for 2,000 students. And continues to concentrate wealth at Providence.*  
*If Sharon and/or OP do not go to South Meck, how else could we keep their SES balanced? Northern section of Pineville stays at SM and southern section to relief school?*
- We need to make sure those who have already responded feel heard and that the top questions and concerns the public has brought up so far (legacy enrollments, IB) are being addressed upfront
- We also need to make sure we engage those who have not been heard yet
- How can we better communicate with the public and be more transparent?

# Next Steps

- Post past materials on Planning website
- Ongoing through Dec 2022: [School sessions](#) with parents, CMS staff and students to provide information, collect feedback, and answer questions
- Ongoing through Jan 2023: engaging district and school leaders, parent workgroup, current and new board members
- January 2023: Community-wide sessions
- Ongoing through Jan 2023: Best practices interviews with leaders in CMS and other districts who have recently opened new high schools
- Delay board vote? (board decision)